

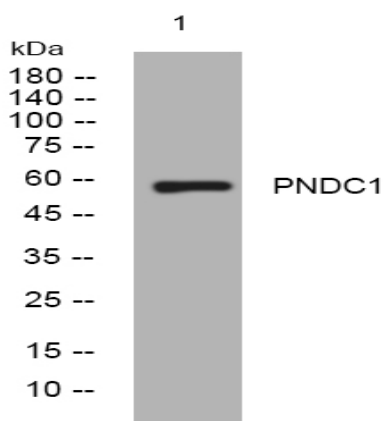
## PNDC1 rabbit pAb

<b>Catalog No :</b>	YT6752
<b>Reactivity :</b>	Human;Mouse
<b>Applications :</b>	WB;IHC
<b>Target :</b>	PNDC1
<b>Fields :</b>	>>RNA degradation
<b>Gene Name :</b>	PNLDC1
<b>Protein Name :</b>	PNDC1
<b>Human Gene Id :</b>	154197
<b>Human Swiss Prot No :</b>	Q8NA58
<b>Immunogen :</b>	Synthesized peptide derived from human PNDC1 AA range: 410-460
<b>Specificity :</b>	This antibody detects endogenous levels of PNDC1 at Human
<b>Formulation :</b>	Liquid in PBS containing 50% glycerol, 0.5% BSA and 0.02% sodium azide.
<b>Source :</b>	Polyclonal, Rabbit,IgG
<b>Dilution :</b>	WB 1:500-2000;IHC 1:50-300
<b>Purification :</b>	The antibody was affinity-purified from rabbit antiserum by affinity-chromatography using epitope-specific immunogen.
<b>Concentration :</b>	1 mg/ml
<b>Storage Stability :</b>	-15°C to -25°C/1 year(Do not lower than -25°C)
<b>Molecularweight :</b>	57kD

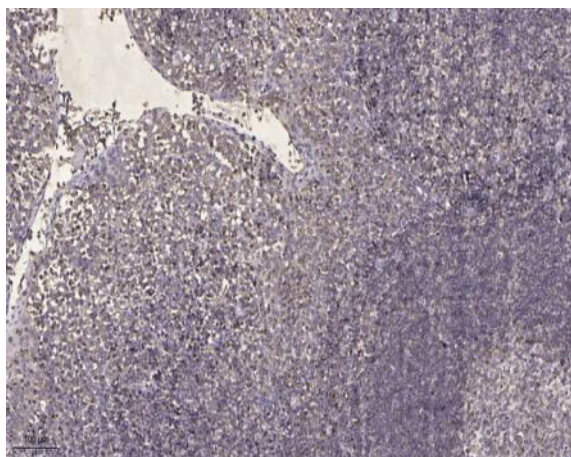
**Function :** similarity:Belongs to the CAF1 family.,

**Subcellular Location :** Endoplasmic reticulum membrane ; Single-pass membrane protein . Localizes mainly in the endoplasmic reticulum (PubMed:27515512) .

## Products Images



Western blot analysis of lysates from SH-SY5Y cells, primary antibody was diluted at 1:1000, 4° over night



Immunohistochemical analysis of paraffin-embedded human tonsil. 1, Antibody was diluted at 1:200(4° overnight). 2, Tris-EDTA,pH9.0 was used for antigen retrieval. 3,Secondary antibody was diluted at 1:200(room temperature, 45min).