

RT4I1 rabbit pAb

| | |
|------------------------------|---|
| Catalog No : | YT6750 |
| Reactivity : | Human;Mouse |
| Applications : | WB |
| Target : | RT4I1 |
| Gene Name : | RTN4IP1 NIMP |
| Protein Name : | RT4I1 |
| Human Gene Id : | 84816 |
| Human Swiss Prot No : | Q8WWV3 |
| Mouse Gene Id : | 170728 |
| Mouse Swiss Prot No : | Q924D0 |
| Immunogen : | Synthesized peptide derived from human RT4I1 AA range: 282-332 |
| Specificity : | This antibody detects endogenous levels of RT4I1 at Human/Mouse |
| Formulation : | Liquid in PBS containing 50% glycerol, 0.5% BSA and 0.02% sodium azide. |
| Source : | Polyclonal, Rabbit,IgG |
| Dilution : | WB 1[?]500-2000 |
| Purification : | The antibody was affinity-purified from rabbit antiserum by affinity-chromatography using epitope-specific immunogen. |
| Concentration : | 1 mg/ml |
| Storage Stability : | -15°C to -25°C/1 year(Do not lower than -25°C) |

Molecularweight : 44kD

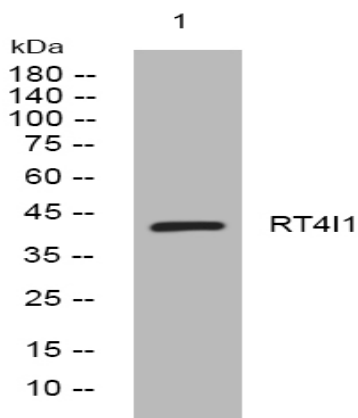
Background : This gene encodes a mitochondrial protein that interacts with reticulon 4, which is a potent inhibitor of regeneration following spinal cord injury. This interaction may be important for reticulon-induced inhibition of neurite growth. Mutations in this gene can cause optic atrophy 10, with or without ataxia, mental retardation, and seizures. There is a pseudogene for this gene on chromosome 12. Alternative splicing results in multiple transcript variants. [provided by RefSeq, Jan 2016],

Function : function:Appears to be a potent inhibitor of regeneration following spinal cord injury.,similarity:Belongs to the zinc-containing alcohol dehydrogenase family. Quinone oxidoreductase subfamily.,subunit:Interacts with RTN4, UQCRC1 and UQCRC2.,tissue specificity:Widely expressed in mitochondria-enriched tissues. Found in heart, muscle, kidney, liver, brain and placenta.,

Subcellular Location : Mitochondrion outer membrane . Colocalizes with the endoplasmic reticulum HSPA5 at spots corresponding to contacts with mitochondria. .

Expression : Widely expressed in mitochondria-enriched tissues. Found in heart, muscle, kidney, liver, brain and placenta.

Products Images



Western blot analysis of lysates from HpeG2 cells, primary antibody was diluted at 1:1000, 4° over night