

VAPA rabbit pAb

Catalog No :	YT6748
Reactivity :	Human;Mouse;Rat
Applications :	WB
Target :	VAPA
Fields :	>>Cholesterol metabolism
Gene Name :	VAPA VAP33
Protein Name :	VAPA
Human Gene Id :	9218
Human Swiss Prot No :	Q9P0L0
Mouse Gene Id :	30960
Mouse Swiss Prot No :	Q9WV55
Rat Gene Id :	58857
Rat Swiss Prot No :	Q9Z270
Immunogen :	Synthesized peptide derived from human VAPA AA range: 34-84
Specificity :	This antibody detects endogenous levels of VAPA at Human/Mouse/Rat
Formulation :	Liquid in PBS containing 50% glycerol, 0.5% BSA and 0.02% sodium azide.
Source :	Polyclonal, Rabbit,IgG
Dilution :	WB 1[?]500-2000
Purification :	The antibody was affinity-purified from rabbit antiserum by affinity-

chromatography using epitope-specific immunogen.

Concentration : 1 mg/ml

Storage Stability : -15°C to -25°C/1 year(Do not lower than -25°C)

Molecularweight : 27kD

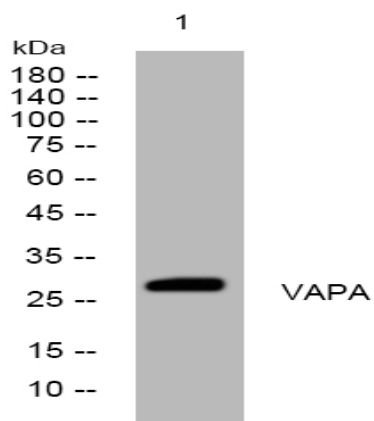
Background : The protein encoded by this gene is a type IV membrane protein. It is present in the plasma membrane and intracellular vesicles. It may also be associated with the cytoskeleton. This protein may function in vesicle trafficking, membrane fusion, protein complex assembly and cell motility. Alternative splicing occurs at this locus and two transcript variants encoding distinct isoforms have been identified. [provided by RefSeq, Jul 2008],

Function : function:May play a role in vesicle trafficking.,similarity:Contains 1 MSP domain.,subcellular location:Present in the plasma membrane and in intracellular vesicles, together with SNARE proteins. May also associate with the cytoskeleton. Colocalizes with OCLN at the tight junction in polarized epithelial cells.,subunit:Homodimer, and heterodimer with VAPB. Interacts with VAMP1, VAMP2, STX1A, BET1, SEC22C and with the C-terminal domain of OCLN. Interacts with OSBPL1A.,tissue specificity:Ubiquitous.,

Subcellular Location : Endoplasmic reticulum membrane ; Single-pass type IV membrane protein . Cell membrane ; Single-pass type IV membrane protein . Cell junction, tight junction . Nucleus membrane . Present in the plasma membrane and in intracellular vesicles, together with SNARE proteins. May also associate with the cytoskeleton. Colocalizes with OCLN at the tight junction in polarized epithelial cells. .

Expression : Ubiquitous.

Products Images



Western blot analysis of lysates from K562 cells, primary antibody was diluted at 1:1000, 4° over night