

SOLH2 rabbit pAb

Catalog No :	YT6747
Reactivity :	Human;Mouse;Rat
Applications :	WB;IHC
Target :	SOLH2
Gene Name :	SOHLH2 TEB1
Protein Name :	SOLH2
Human Gene Id :	100526761
Human Swiss Prot No :	Q9NX45
Mouse Gene Id :	74434
Mouse Swiss Prot No :	Q9D489
Rat Gene Id :	619575
Rat Swiss Prot No :	Q3MHT3
Immunogen :	Synthesized peptide derived from human SOLH2 AA range: 117-167
Specificity :	This antibody detects endogenous levels of SOLH2 at Human/Mouse/Rat
Formulation :	Liquid in PBS containing 50% glycerol, 0.5% BSA and 0.02% sodium azide.
Source :	Polyclonal, Rabbit,IgG
Dilution :	WB 1:500-2000;IHC 1:50-300
Purification :	The antibody was affinity-purified from rabbit antiserum by affinity-chromatography using epitope-specific immunogen.

Concentration : 1 mg/ml

Storage Stability : -15°C to -25°C/1 year(Do not lower than -25°C)

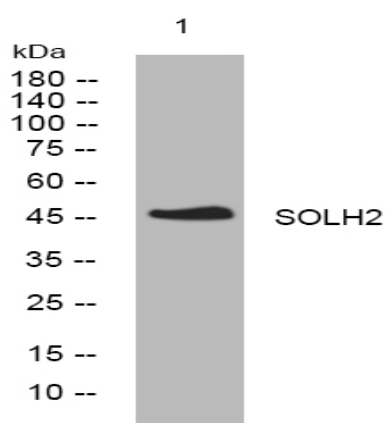
Molecularweight : 47kD

Background : This gene encodes one of testis-specific transcription factors which are essential for spermatogenesis, oogenesis and folliculogenesis. This gene is located on chromosome 13. The proteins encoded by this gene and another testis-specific transcription factor, SOHLH1, can form heterodimers, in addition to homodimers. There is a read-through locus (GeneID: 100526761) that shares sequence identity with this gene and the upstream CCDC169 (GeneID: 728591). Alternatively spliced transcript variants encoding different isoforms have been found for this gene. [provided by RefSeq, Aug 2013],

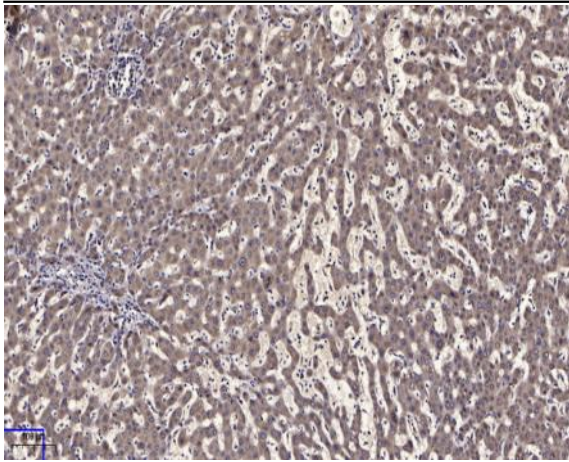
Function : function:Probable transcription factor, which may be involved in spermatogenesis and oogenesis.,similarity:Contains 1 basic helix-loop-helix (bHLH) domain.,

Subcellular Location : Nucleus . Cytoplasm . Translocates from the cytoplasm into the nucleus and the translocation is dependent on SOHLH1 expression. .

Products Images



Western blot analysis of lysates from AD293 cells, primary antibody was diluted at 1:1000, 4° over night



Immunohistochemical analysis of paraffin-embedded human liver cancer. 1, Antibody was diluted at 1:200(4° overnight). 2, Tris-EDTA,pH9.0 was used for antigen retrieval. 3,Secondary antibody was diluted at 1:200(room temperature, 45min).