

TM198 rabbit pAb

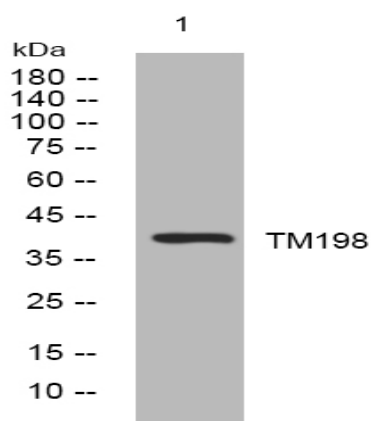
Catalog No :	YT6745
Reactivity :	Human;Mouse
Applications :	WB;ELISA;IHC
Target :	TM198
Gene Name :	TMEM198
Protein Name :	TM198
Human Gene Id :	130612
Human Swiss Prot No :	Q66K66
Mouse Gene Id :	319998
Mouse Swiss Prot No :	Q8BG75
Immunogen :	Synthesized peptide derived from human TM198 AA range: 273-323
Specificity :	This antibody detects endogenous levels of TM198 at Human/Mouse
Formulation :	Liquid in PBS containing 50% glycerol, 0.5% BSA and 0.02% sodium azide.
Source :	Polyclonal, Rabbit,IgG
Dilution :	WB 1:500-2000;IHC 1:50-300; ELISA 2000-20000
Purification :	The antibody was affinity-purified from rabbit antiserum by affinity-chromatography using epitope-specific immunogen.
Concentration :	1 mg/ml
Storage Stability :	-15°C to -25°C/1 year(Do not lower than -25°C)

Molecularweight : 40kD

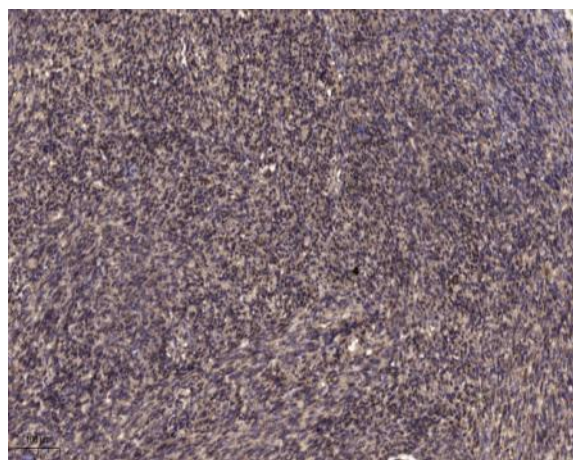
Function : similarity:Belongs to the TMEM198 family.,

Subcellular Location : Membrane ; Multi-pass membrane protein . Cell membrane . Cytoplasmic vesicle . Largely located to vesicle-like structures. .

Products Images



Western blot analysis of lysates from CACO2 cells, primary antibody was diluted at 1:1000, 4° over night



Immunohistochemical analysis of paraffin-embedded human uterus. 1, Antibody was diluted at 1:200(4° overnight). 2, Tris-EDTA,pH9.0 was used for antigen retrieval. 3,Secondary antibody was diluted at 1:200(room temperature, 45min).