

PWP2A rabbit pAb

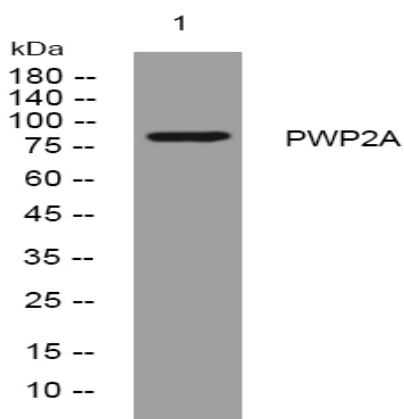
Catalog No :	YT6744
Reactivity :	Human;Mouse
Applications :	WB;ELISA;IHC
Target :	PWP2A
Gene Name :	PWWP2A KIAA1935 MST101
Protein Name :	PWP2A
Human Gene Id :	114825
Human Swiss Prot No :	Q96N64
Mouse Gene Id :	70802
Mouse Swiss Prot No :	Q69Z61
Immunogen :	Synthesized peptide derived from human PWP2A AA range: 237-287
Specificity :	This antibody detects endogenous levels of PWP2A at Human/Mouse
Formulation :	Liquid in PBS containing 50% glycerol, 0.5% BSA and 0.02% sodium azide.
Source :	Polyclonal, Rabbit,IgG
Dilution :	WB 1:500-2000;IHC 1:50-300; ELISA 2000-20000
Purification :	The antibody was affinity-purified from rabbit antiserum by affinity-chromatography using epitope-specific immunogen.
Concentration :	1 mg/ml
Storage Stability :	-15°C to -25°C/1 year(Do not lower than -25°C)

Molecularweight : 83kD

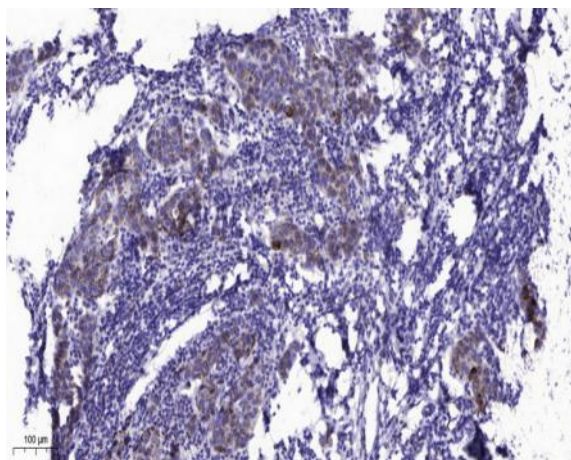
Function : similarity:Contains 1 PWWP domain.,

Subcellular Location : Nucleus .

Products Images



Western blot analysis of lysates from HEK293 cells, primary antibody was diluted at 1:1000, 4° over night



Immunohistochemical analysis of paraffin-embedded human Breast cancer. 1, Antibody was diluted at 1:200(4° overnight). 2, Tris-EDTA,pH9.0 was used for antigen retrieval. 3,Secondary antibody was diluted at 1:200(room temperature, 45min).