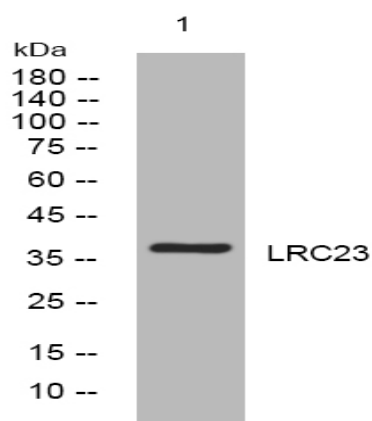


LRC23 rabbit pAb

Catalog No :	YT6742
Reactivity :	Human;Mouse
Applications :	WB
Target :	LRC23
Gene Name :	LRRC23 LRPB7
Protein Name :	LRC23
Human Gene Id :	10233
Human Swiss Prot No :	Q53EV4
Mouse Gene Id :	16977
Mouse Swiss Prot No :	O35125
Immunogen :	Synthesized peptide derived from human LRC23 AA range: 126-176
Specificity :	This antibody detects endogenous levels of LRC23 at Human/Mouse
Formulation :	Liquid in PBS containing 50% glycerol, 0.5% BSA and 0.02% sodium azide.
Source :	Polyclonal, Rabbit,IgG
Dilution :	WB 1:500-2000
Purification :	The antibody was affinity-purified from rabbit antiserum by affinity-chromatography using epitope-specific immunogen.
Concentration :	1 mg/ml
Storage Stability :	-15°C to -25°C/1 year(Do not lower than -25°C)

Molecularweight : 38kD**Function :** similarity:Contains 5 LRR (leucine-rich) repeats.,

Products Images



Western blot analysis of lysates from A549 cells, primary antibody was diluted at 1:1000, 4° over night