

## MYH7B rabbit pAb

<b>Catalog No :</b>	YT6736
<b>Reactivity :</b>	Human;Mouse
<b>Applications :</b>	WB;IHC
<b>Target :</b>	MYH7B
<b>Gene Name :</b>	MYH7B KIAA1512
<b>Protein Name :</b>	MYH7B
<b>Human Gene Id :</b>	57644
<b>Human Swiss Prot No :</b>	A7E2Y1
<b>Mouse Gene Id :</b>	668940
<b>Mouse Swiss Prot No :</b>	A2AQP0
<b>Immunogen :</b>	Synthesized peptide derived from human MYH7B AA range: 606-656
<b>Specificity :</b>	This antibody detects endogenous levels of MYH7B at Human/Mouse
<b>Formulation :</b>	Liquid in PBS containing 50% glycerol, 0.5% BSA and 0.02% sodium azide.
<b>Source :</b>	Polyclonal, Rabbit,IgG
<b>Dilution :</b>	WB 1:500-2000;IHC 1:50-300
<b>Purification :</b>	The antibody was affinity-purified from rabbit antiserum by affinity-chromatography using epitope-specific immunogen.
<b>Concentration :</b>	1 mg/ml
<b>Storage Stability :</b>	-15°C to -25°C/1 year(Do not lower than -25°C)



**Molecularweight :** 214kD

### Background :

The myosin II molecule is a multi-subunit complex consisting of two heavy chains and four light chains. This gene encodes a heavy chain of myosin II, which is a member of the motor-domain superfamily. The heavy chain includes a globular motor domain, which catalyzes ATP hydrolysis and interacts with actin, and a tail domain in which heptad repeat sequences promote dimerization by interacting to form a rod-like alpha-helical coiled coil. This heavy chain subunit is a slow-twitch myosin. Alternatively spliced transcript variants have been found, but the full-length nature of these variants is not determined. [provided by RefSeq, Mar 2010],

### Function :

caution:This protein sequence has been named 'Slow A' MYH14 (PubMed:11919279), but it also appears also as 'Slow B' MYH15 within the reference.,developmental stage:Found in fetal liver and brain.,function:Involved in muscle contraction.,miscellaneous:Expression does not vary in normal patients compared to patients with acute monocytic leukemia.,miscellaneous:The cardiac alpha isoform is a 'fast' ATPase myosin, while the beta isoform is a 'slow' ATPase.,similarity:Contains 1 IQ domain.,similarity:Contains 1 myosin head-like domain.,subunit:Muscle myosin is a hexameric protein that consists of 2 heavy chain subunits (MHC), 2 alkali light chain subunits (MLC) and 2 regulatory light chain subunits (MLC-2).,tissue specificity:Expressed in heart, skeletal muscle, testis, and all specific brain regions examined. Slightly lower expression was detected in ovary and kidney, and intermediate expres

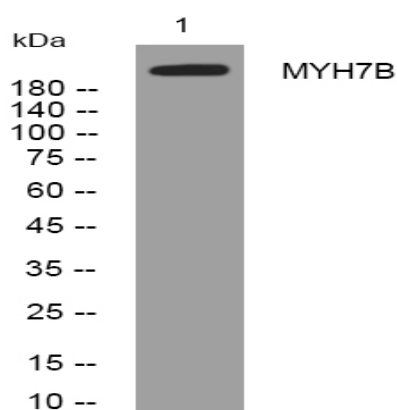
### Subcellular Location :

Membrane ; Peripheral membrane protein .

### Expression :

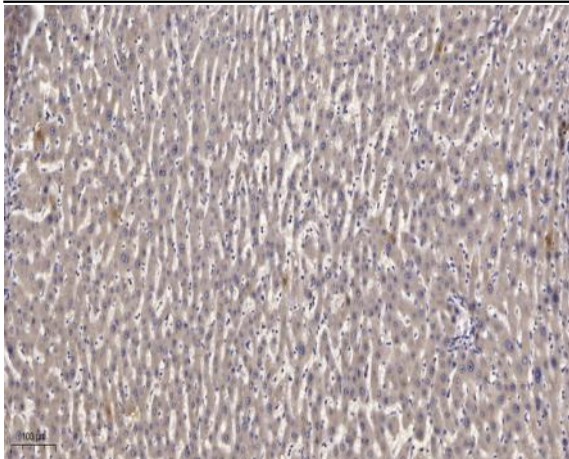
Expressed in heart, skeletal muscle, testis, and all specific brain regions examined. Slightly lower expression was detected in ovary and kidney, and intermediate expression was detected in lung, pancreas, spleen and liver.

## Products Images



Western blot analysis of lysates from HuvEc cells, primary antibody was diluted at 1:1000, 4° over night





Immunohistochemical analysis of paraffin-embedded human liver cancer. 1, Antibody was diluted at 1:200(4° overnight). 2, Tris-EDTA,pH9.0 was used for antigen retrieval. 3,Secondary antibody was diluted at 1:200(room temperature, 45min).