

PTN4 rabbit pAb

Catalog No :	YT6730
Reactivity :	Human;Mouse
Applications :	WB;IHC
Target :	PTN4
Gene Name :	PTPN4
Protein Name :	PTN4
Human Gene Id :	5775
Human Swiss Prot No :	P29074
Mouse Gene Id :	19258
Mouse Swiss Prot No :	Q9WU22
Immunogen :	Synthesized peptide derived from human PTN4 AA range: 496-546
Specificity :	This antibody detects endogenous levels of PTN4 at Human/Mouse
Formulation :	Liquid in PBS containing 50% glycerol, 0.5% BSA and 0.02% sodium azide.
Source :	Polyclonal, Rabbit,IgG
Dilution :	WB 1:500-2000;IHC 1:50-300
Purification :	The antibody was affinity-purified from rabbit antiserum by affinity-chromatography using epitope-specific immunogen.
Concentration :	1 mg/ml
Storage Stability :	-15°C to -25°C/1 year(Do not lower than -25°C)

Molecularweight : 102kD

Background :

The protein encoded by this gene is a member of the protein tyrosine phosphatase (PTP) family. PTPs are known to be signaling molecules that regulate a variety of cellular processes including cell growth, differentiation, mitotic cycle, and oncogenic transformation. This protein contains a C-terminal PTP domain and an N-terminal domain homologous to the band 4.1 superfamily of cytoskeletal-associated proteins. This PTP has been shown to interact with glutamate receptor delta 2 and epsilon subunits, and is thought to play a role in signalling downstream of the glutamate receptors through tyrosine dephosphorylation. [provided by RefSeq, Jul 2008],

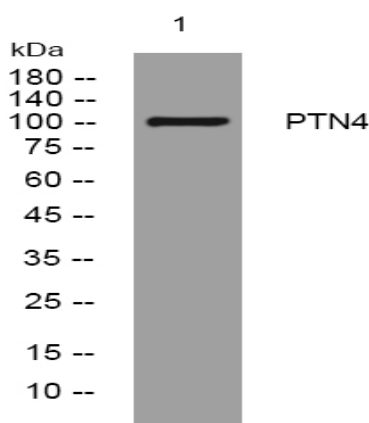
Function :

catalytic activity:Protein tyrosine phosphate + H(2)O = protein tyrosine + phosphate.,function:May act at junctions between the membrane and the cytoskeleton.,similarity:Belongs to the protein-tyrosine phosphatase family. Non-receptor class subfamily.,similarity:Contains 1 FERM domain.,similarity:Contains 1 PDZ (DHR) domain.,similarity:Contains 1 tyrosine-protein phosphatase domain.,

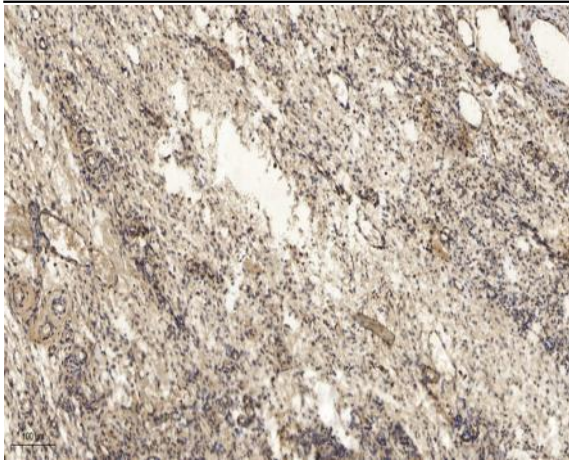
Subcellular Location :

Cell membrane ; Peripheral membrane protein ; Cytoplasmic side . Cytoplasm, cytoskeleton . Cytoplasm .

Products Images



Western blot analysis of lysates from HpeG2 cells, primary antibody was diluted at 1:1000, 4° over night



Immunohistochemical analysis of paraffin-embedded human oophoroma. 1, Antibody was diluted at 1:200(4° overnight). 2, Tris-EDTA,pH9.0 was used for antigen retrieval. 3,Secondary antibody was diluted at 1:200(room temperature, 45min).