

SDC3 rabbit pAb

Catalog No :	YT6720
Reactivity :	Human;Mouse;Rat
Applications :	WB;IHC
Target :	SDC3
Fields :	>>Cell adhesion molecules
Gene Name :	SDC3 KIAA0468
Protein Name :	SDC3
Human Gene Id :	9672
Human Swiss Prot No :	O75056
Mouse Gene Id :	20970
Mouse Swiss Prot No :	Q64519
Rat Gene Id :	116673
Rat Swiss Prot No :	P33671
Immunogen :	Synthesized peptide derived from human SDC3 AA range: 131-181
Specificity :	This antibody detects endogenous levels of SDC3 at Human/Mouse/Rat
Formulation :	Liquid in PBS containing 50% glycerol, 0.5% BSA and 0.02% sodium azide.
Source :	Polyclonal, Rabbit,IgG
Dilution :	WB 1:500-2000;IHC 1:50-300
Purification :	The antibody was affinity-purified from rabbit antiserum by affinity-

chromatography using epitope-specific immunogen.

Concentration : 1 mg/ml

Storage Stability : -15°C to -25°C/1 year(Do not lower than -25°C)

Molecularweight : 49kD

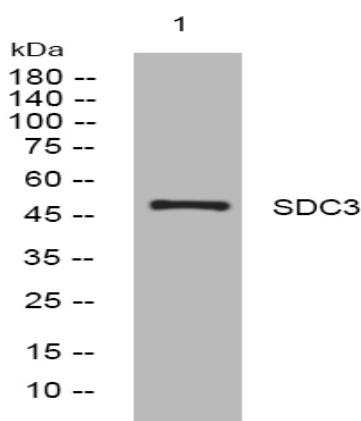
Background : The protein encoded by this gene belongs to the syndecan proteoglycan family. It may play a role in the organization of cell shape by affecting the actin cytoskeleton, possibly by transferring signals from the cell surface in a sugar-dependent mechanism. Allelic variants of this gene have been associated with obesity. [provided by RefSeq, Oct 2009],

Function : function:Cell surface proteoglycan that may bear heparan sulfate (By similarity). May have a role in the organization of cell shape by affecting the actin cytoskeleton, possibly by transferring signals from the cell surface in a sugar-dependent mechanism.,PTM:O-glycosylated within the Thr/Ser-rich region which could interact with lectin domains on other molecules.,similarity:Belongs to the syndecan proteoglycan family.,tissue specificity:Expressed in the nervous system, the adrenal gland, and the spleen.,

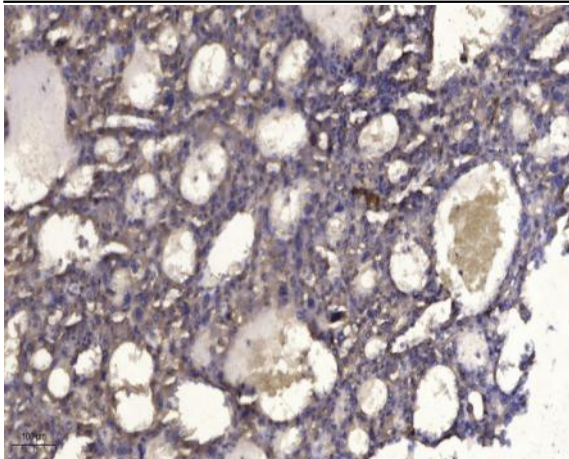
Subcellular Location : Cell membrane; Single-pass type I membrane protein.

Expression : Expressed in the nervous system, the adrenal gland, and the spleen.

Products Images



Western blot analysis of lysates from HpeG2 cells, primary antibody was diluted at 1:1000, 4° over night



Immunohistochemical analysis of paraffin-embedded human liver cancer. 1, Antibody was diluted at 1:200(4° overnight). 2, Tris-EDTA,pH9.0 was used for antigen retrieval. 3,Secondary antibody was diluted at 1:200(room temperature, 45min).