

## RCBT2 rabbit pAb

|                              |   |
|------------------------------|---|
| <b>Catalog No :</b>          | YT6715  |
| <b>Reactivity :</b>          | Human;Mouse;Rat   |
| <b>Applications :</b>        | WB;ELISA;IHC  |
| <b>Target :</b>              | RCBT2   |
| <b>Gene Name :</b>           | RCBTB2 CHC1L RLG  |
| <b>Protein Name :</b>        | RCBT2   |
| <b>Human Gene Id :</b>       | 1102  |
| <b>Human Swiss Prot No :</b> | O95199  |
| <b>Mouse Gene Id :</b>       | 105670  |
| <b>Mouse Swiss Prot No :</b> | Q99LJ7  |
| <b>Rat Gene Id :</b>         | 290363  |
| <b>Rat Swiss Prot No :</b>   | Q6P798  |
| <b>Immunogen :</b>           | Synthesized peptide derived from human RCBT2 AA range: 53-103   |
| <b>Specificity :</b>         | This antibody detects endogenous levels of RCBT2 at Human/Mouse/Rat   |
| <b>Formulation :</b>         | Liquid in PBS containing 50% glycerol, 0.5% BSA and 0.02% sodium azide.   |
| <b>Source :</b>              | Polyclonal, Rabbit,IgG  |
| <b>Dilution :</b>            | WB 1:500-2000;IHC 1:50-300; ELISA 2000-20000  |
| <b>Purification :</b>        | The antibody was affinity-purified from rabbit antiserum by affinity-chromatography using epitope-specific immunogen. |

**Concentration :** 1 mg/ml

**Storage Stability :** -15°C to -25°C/1 year(Do not lower than -25°C)

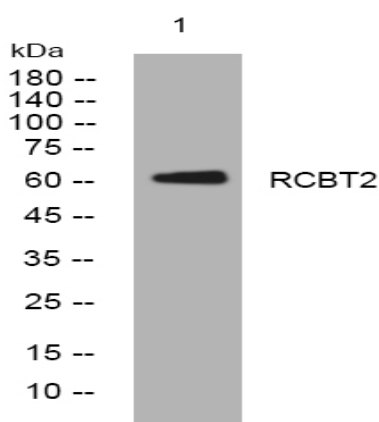
**Molecularweight :** 61kD

**Background :** This gene encodes a protein containing two C-terminal BTB/POZ domains that is related to regulator of chromosome condensation (RCC). The encoded protein may act as a guanine nucleotide exchange factor. This gene is observed to be lost or underexpressed in prostate cancers. There is a pseudogene of this gene on chromosome 10. Alternative splicing results in multiple transcript variants. [provided by RefSeq, Nov 2013],

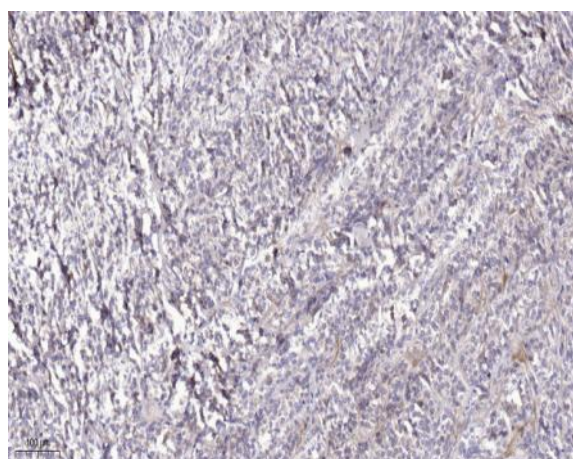
**Function :** similarity:Contains 1 BTB (POZ) domain.,similarity:Contains 2 BTB (POZ) domains.,similarity:Contains 6 RCC1 repeats.,

**Subcellular Location :** Cytoplasmic vesicle, secretory vesicle, acrosome . Mainly found in the acrosomal cap region. .

## Products Images



Western blot analysis of lysates from A431 cells, primary antibody was diluted at 1:1000, 4° over night



Immunohistochemical analysis of paraffin-embedded human Colon cancer. 1, Antibody was diluted at 1:200(4° overnight). 2, Tris-EDTA,pH9.0 was used for antigen retrieval. 3,Secondary antibody was diluted at 1:200(room temperature, 45min).