

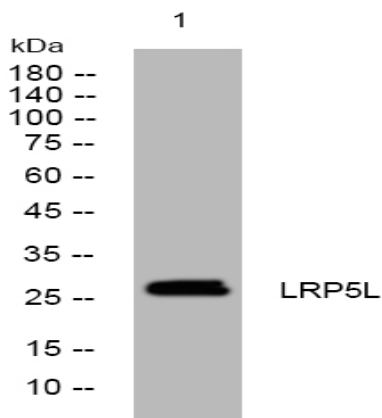
## LRP5L rabbit pAb

<b>Catalog No :</b>	YT6712
<b>Reactivity :</b>	Human
<b>Applications :</b>	WB;ELISA;IHC
<b>Target :</b>	LRP5L
<b>Gene Name :</b>	LRP5L
<b>Protein Name :</b>	LRP5L
<b>Human Gene Id :</b>	91355
<b>Human Swiss Prot No :</b>	A4QPB2
<b>Immunogen :</b>	Synthesized peptide derived from human LRP5L AA range: 68-118
<b>Specificity :</b>	This antibody detects endogenous levels of LRP5L at Human
<b>Formulation :</b>	Liquid in PBS containing 50% glycerol, 0.5% BSA and 0.02% sodium azide.
<b>Source :</b>	Polyclonal, Rabbit,IgG
<b>Dilution :</b>	WB 1:500-2000;IHC 1:50-300; ELISA 2000-20000
<b>Purification :</b>	The antibody was affinity-purified from rabbit antiserum by affinity-chromatography using epitope-specific immunogen.
<b>Concentration :</b>	1 mg/ml
<b>Storage Stability :</b>	-15°C to -25°C/1 year(Do not lower than -25°C)
<b>Molecularweight :</b>	28kD
<b>Function :</b>	similarity:Contains 5 LDL-receptor class B repeats.,

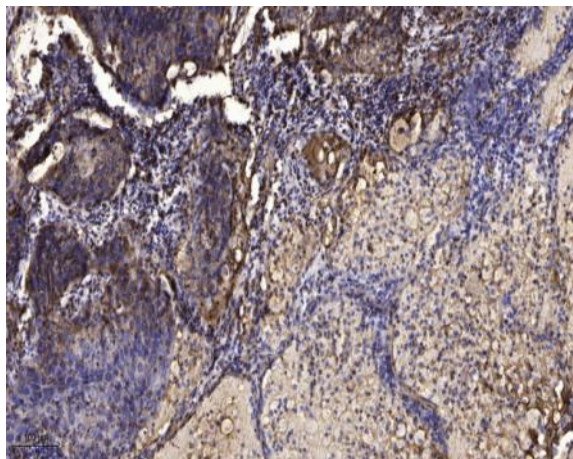
**Subcellular  
Location :**

plasma membrane, receptor complex,

## Products Images



Western blot analysis of lysates from HpeG2 cells, primary antibody was diluted at 1:1000, 4° over night



Immunohistochemical analysis of paraffin-embedded human Squamous cell carcinoma of lung. 1, Antibody was diluted at 1:200(4° overnight). 2, Tris-EDTA, pH9.0 was used for antigen retrieval. 3, Secondary antibody was diluted at 1:200(room temperature, 45min).