

ARID2 rabbit pAb

Catalog No :	YT6705
Reactivity :	Human;Mouse
Applications :	WB
Target :	ARID2
Fields :	>>Hepatocellular carcinoma
Gene Name :	ARID2 KIAA1557
Protein Name :	ARID2
Human Gene Id :	196528
Human Swiss Prot No :	Q68CP9
Immunogen :	Synthesized peptide derived from human ARID2 AA range: 309-359
Specificity :	This antibody detects endogenous levels of ARID2 at Human
Formulation :	Liquid in PBS containing 50% glycerol, 0.5% BSA and 0.02% sodium azide.
Source :	Polyclonal, Rabbit,IgG
Dilution :	WB 1[?]500-2000
Purification :	The antibody was affinity-purified from rabbit antiserum by affinity-chromatography using epitope-specific immunogen.
Concentration :	1 mg/ml
Storage Stability :	-15°C to -25°C/1 year(Do not lower than -25°C)
Molecularweight :	202kD

Background : ARID2 is a subunit of the PBAF chromatin-remodeling complex (see BAF180; MIM 606083), which facilitates ligand-dependent transcriptional activation by nuclear receptors (Yan et al., 2005 [PubMed 15985610]).[supplied by OMIM, Mar 2008],

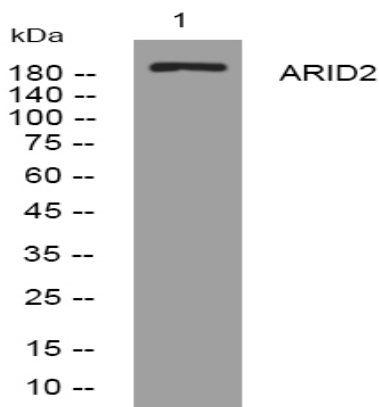
Function : developmental stage:Up-regulated in adult heart (at protein level).,function:Involved in transcriptional activation and repression of select genes by chromatin remodeling (alteration of DNA-nucleosome topology). Required for the stability of the SWI/SNF chromatin remodeling complex SWI/SNF-B (PBAF). May be involved in targeting the complex to different genes. May be involved in regulating transcriptional activation of cardiac genes.,sequence caution:Differs from position 1094 onward for unknown reason.,similarity:Contains 1 ARID domain.,similarity:Contains 1 C2H2-type zinc finger.,subunit:Component of the SWI/SNF-B (PBAF) chromatin remodeling complex, at least composed of SMARCA4/BRG1, SMARCB1/BAF47, ACTL6A/BAF53A or ACTL6B/BAF53B, SMARCE1/BAF57, SMARCD1/BAF60A, SMARCD2/BAF60B, perhaps SMARCD3/BAF60C, SMARCC1/BAF155, SMARCC2/BAF170, PB1/BAF180, ARID2/BAF200, ARID1A/BAF250A or ARID1B/BAF2

Subcellular Location : Nucleus.

Location :

Expression : Highly expressed in heart.

Products Images



Western blot analysis of lysates from HeLa cells, primary antibody was diluted at 1:1000, 4° over night