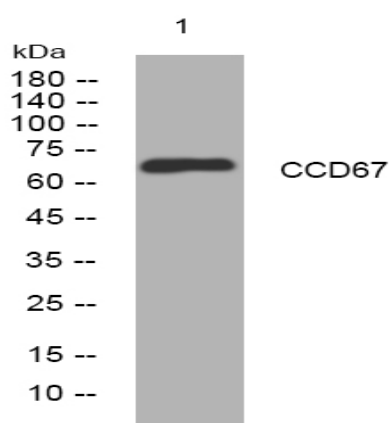


CCD67 rabbit pAb

Catalog No :	YT6704
Reactivity :	Human;Mouse;Rat
Applications :	WB
Target :	CCD67
Gene Name :	CCDC67
Protein Name :	CCD67
Human Gene Id :	159989
Human Swiss Prot No :	Q05D60
Mouse Gene Id :	234964
Mouse Swiss Prot No :	Q7M6Y5
Rat Gene Id :	315438
Rat Swiss Prot No :	Q5U3Z6
Immunogen :	Synthesized peptide derived from human CCD67 AA range: 108-158
Specificity :	This antibody detects endogenous levels of CCD67 at Human/Mouse/Rat
Formulation :	Liquid in PBS containing 50% glycerol, 0.5% BSA and 0.02% sodium azide.
Source :	Polyclonal, Rabbit,IgG
Dilution :	WB 1:500-2000
Purification :	The antibody was affinity-purified from rabbit antiserum by affinity-chromatography using epitope-specific immunogen.

Concentration :	<u>1 mg/ml</u>
Storage Stability :	<u>-15°C to -25°C/1 year(Do not lower than -25°C)</u>
Molecularweight :	<u>66kD</u>
Function :	<u>caution:It is uncertain whether Met-1 or Met-9 is the initiator.,</u>
Subcellular Location :	<u>Cytoplasm . Localizes to the deuterosome. .</u>

Products Images



Western blot analysis of lysates from MCF-7 cells, primary antibody was diluted at 1:1000, 4° over night