

**C1QT6 rabbit pAb**

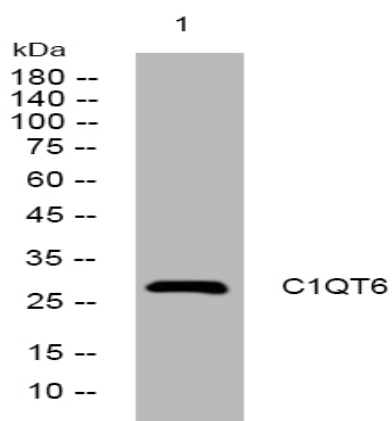
<b>Catalog No :</b>	YT6703
<b>Reactivity :</b>	Human;Mouse;Rat
<b>Applications :</b>	WB
<b>Target :</b>	C1QT6
<b>Gene Name :</b>	C1QTNF6 CTRP6 UNQ581/PRO1151
<b>Protein Name :</b>	C1QT6
<b>Human Gene Id :</b>	114904
<b>Human Swiss Prot No :</b>	Q9BXI9
<b>Mouse Gene Id :</b>	72709
<b>Mouse Swiss Prot No :</b>	Q6IR41
<b>Rat Gene Id :</b>	315114
<b>Rat Swiss Prot No :</b>	Q3T1I2
<b>Immunogen :</b>	Synthesized peptide derived from human C1QT6 AA range: 31-81
<b>Specificity :</b>	This antibody detects endogenous levels of C1QT6 at Human/Mouse/Rat
<b>Formulation :</b>	Liquid in PBS containing 50% glycerol, 0.5% BSA and 0.02% sodium azide.
<b>Source :</b>	Polyclonal, Rabbit,IgG
<b>Dilution :</b>	WB 1:500-2000
<b>Purification :</b>	The antibody was affinity-purified from rabbit antiserum by affinity-chromatography using epitope-specific immunogen.

---

<b>Concentration :</b>	<u>1 mg/ml</u>
<b>Storage Stability :</b>	<u>-15°C to -25°C/1 year(Do not lower than -25°C)</u>
<b>Molecularweight :</b>	<u>28kD</u>
<b>Function :</b>	<u>similarity:Contains 1 C1q domain.,similarity:Contains 1 collagen-like domain.,</u>
<b>Subcellular Location :</b>	<u>Secreted .</u>

---

## Products Images



Western blot analysis of lysates from HuvEc cells, primary antibody was diluted at 1:1000, 4° over night