

CK021 rabbit pAb

Catalog No :	YT6700
Reactivity :	Human
Applications :	WB
Target :	CK021
Gene Name :	C11orf21
Protein Name :	CK021
Human Gene Id :	29125
Human Swiss Prot No :	Q9P2W6
Immunogen :	Synthesized peptide derived from human CK021 AA range: 16-66
Specificity :	This antibody detects endogenous levels of CK021 at Human
Formulation :	Liquid in PBS containing 50% glycerol, 0.5% BSA and 0.02% sodium azide.
Source :	Polyclonal, Rabbit,IgG
Dilution :	WB 1:500-2000
Purification :	The antibody was affinity-purified from rabbit antiserum by affinity-chromatography using epitope-specific immunogen.
Concentration :	1 mg/ml
Storage Stability :	-15°C to -25°C/1 year(Do not lower than -25°C)
Molecularweight :	15kD
Function :	tissue specificity:Expressed exclusively in heart.,

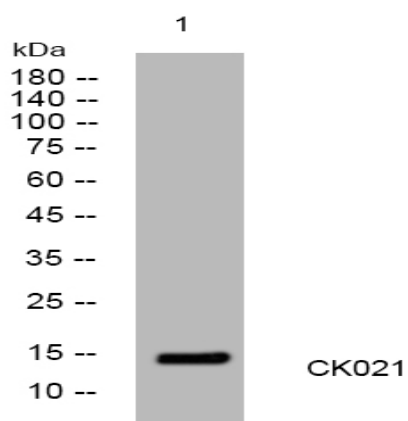
**Subcellular
Location :**

Cytoplasm.

Expression :

Expressed exclusively in heart.

Products Images



Western blot analysis of lysates from HuvEc cells, primary antibody was diluted at 1:1000, 4° over night