

BT3A3 rabbit pAb

Catalog No :	YT6696
Reactivity :	Human
Applications :	WB
Target :	BT3A3
Gene Name :	BTN3A3 BTF3
Protein Name :	BT3A3
Human Gene Id :	10384
Human Swiss Prot No :	O00478
Immunogen :	Synthesized peptide derived from human BT3A3 AA range: 148-198
Specificity :	This antibody detects endogenous levels of BT3A3 at Human
Formulation :	Liquid in PBS containing 50% glycerol, 0.5% BSA and 0.02% sodium azide.
Source :	Polyclonal, Rabbit,IgG
Dilution :	WB 1:500-2000
Purification :	The antibody was affinity-purified from rabbit antiserum by affinity-chromatography using epitope-specific immunogen.
Concentration :	1 mg/ml
Storage Stability :	-15°C to -25°C/1 year(Do not lower than -25°C)
Molecularweight :	64kD
Background :	The butyrophilin (BTN) genes are a group of major histocompatibility complex (MHC)-associated genes that encode type I membrane proteins with 2 extracellular immunoglobulin (Ig) domains and an intracellular B30.2 (PRYSPRY)

domain. Three subfamilies of human BTN genes are located in the MHC class I region: the single-copy BTN1A1 gene (MIM 601610) and the BTN2 (e.g., BTN2A1; MIM 613590) and BTN3 (e.g., BNT3A3) genes, which have undergone tandem duplication, resulting in 3 copies of each (summary by Smith et al., 2010 [PubMed 20208008]).[supplied by OMIM, Nov 2010],

Function :

similarity:Belongs to the immunoglobulin superfamily. BTN/MOG family.,similarity:Contains 1 B30.2/SPRY domain.,similarity:Contains 2 Ig-like V-type (immunoglobulin-like) domains.,

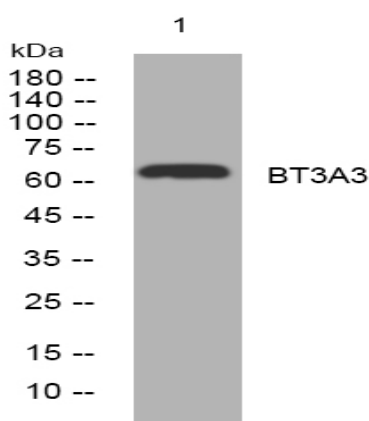
Subcellular Location :

Cell membrane ; Single-pass type I membrane protein .

Expression :

Detected in peripheral blood mononuclear cells and in T-cells (at protein level).
Detected in spleen and lymphocytes.

Products Images



Western blot analysis of lysates from HeLa cells, primary antibody was diluted at 1:1000, 4 ° over night