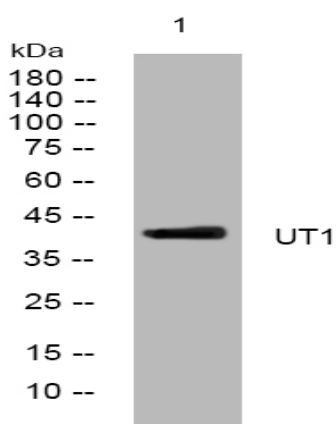


UT1 rabbit pAb

Catalog No :	YT6694
Reactivity :	Human;Mouse;Rat
Applications :	WB
Target :	UT1
Gene Name :	SLC14A1 HUT11 JK RACH1 UT1 UTE
Protein Name :	UT1
Human Gene Id :	6563
Human Swiss Prot No :	Q13336
Mouse Gene Id :	108052
Mouse Swiss Prot No :	Q8VHL0
Rat Gene Id :	54301
Rat Swiss Prot No :	P97689
Immunogen :	Synthesized peptide derived from human UT1 AA range: 54-104
Specificity :	This antibody detects endogenous levels of UT1 at Human/Mouse/Rat
Formulation :	Liquid in PBS containing 50% glycerol, 0.5% BSA and 0.02% sodium azide.
Source :	Polyclonal, Rabbit,IgG
Dilution :	WB 1:500-2000
Purification :	The antibody was affinity-purified from rabbit antiserum by affinity-chromatography using epitope-specific immunogen.

Concentration :	1 mg/ml
Storage Stability :	-15°C to -25°C/1 year(Do not lower than -25°C)
Molecularweight :	43kD
Background :	The protein encoded by this gene is a membrane transporter that mediates urea transport in erythrocytes. This gene forms the basis for the Kidd blood group system. [provided by RefSeq, Mar 2009],
Function :	function:Specialized low-affinity urea transporter. Mediates urea transport in erythrocytes.,online information:Blood group antigen gene mutation database,polymorphism:SLC14A1 is responsible for the Kidd blood group system. The molecular basis of the Jk(a)/Jk(b) blood group antigens is a single variation in position 280; Asp-280 corresponds to Jk(a) and Asn-280 to Jk(b).,tissue specificity:Erythrocytes.,
Subcellular Location :	Cell membrane ; Multi-pass membrane protein . Basolateral cell membrane ; Multi-pass membrane protein . Restricted to the basolateral membrane in various portions of the urothelium. .
Expression :	Detected in erythrocytes (at protein level). Erythrocytes.

Products Images



Western blot analysis of lysates from HeLa cells, primary antibody was diluted at 1:1000, 4° over night