

TM242 rabbit pAb

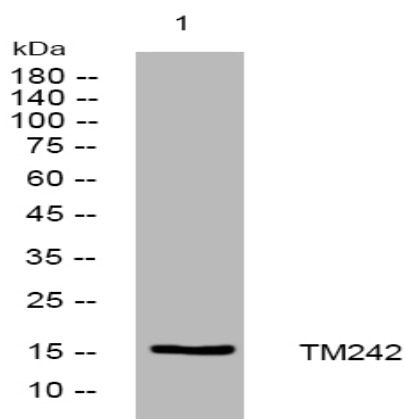
Catalog No :	YT6693
Reactivity :	Human;Mouse
Applications :	WB
Target :	TM242
Gene Name :	TMEM242 C6orf35 BM-033 HSPC287
Protein Name :	TM242
Human Gene Id :	729515
Human Swiss Prot No :	Q9NWH2
Mouse Gene Id :	70544
Mouse Swiss Prot No :	Q8VCR3
Immunogen :	Synthesized peptide derived from human TM242 AA range: 53-103
Specificity :	This antibody detects endogenous levels of TM242 at Human/Mouse
Formulation :	Liquid in PBS containing 50% glycerol, 0.5% BSA and 0.02% sodium azide.
Source :	Polyclonal, Rabbit,IgG
Dilution :	WB 1[?]500-2000
Purification :	The antibody was affinity-purified from rabbit antiserum by affinity-chromatography using epitope-specific immunogen.
Concentration :	1 mg/ml
Storage Stability :	-15°C to -25°C/1 year(Do not lower than -25°C)

Molecularweight : 16kD

Function : similarity:Belongs to the UPF0463 family.,similarity:Contains 28 TPR repeats.,

Subcellular Location : Mitochondrion inner membrane ; Multi-pass membrane protein .

Products Images



Western blot analysis of lysates from HpeG2 cells, primary antibody was diluted at 1:1000, 4° over night