

**NAT8L rabbit pAb**

<b>Catalog No :</b>	YT6692
<b>Reactivity :</b>	Human;Mouse;Rat
<b>Applications :</b>	WB;ELISA;IHC
<b>Target :</b>	NAT8L
<b>Fields :</b>	>>Alanine, aspartate and glutamate metabolism;>>Metabolic pathways
<b>Gene Name :</b>	NAT8L CML3
<b>Protein Name :</b>	NAT8L
<b>Human Gene Id :</b>	339983
<b>Human Swiss Prot No :</b>	Q8N9F0
<b>Mouse Gene Id :</b>	269642
<b>Mouse Swiss Prot No :</b>	Q3UGX3
<b>Rat Gene Id :</b>	289727
<b>Rat Swiss Prot No :</b>	D3ZVU9
<b>Immunogen :</b>	Synthesized peptide derived from human NAT8L AA range: 218-268
<b>Specificity :</b>	This antibody detects endogenous levels of NAT8L at Human/Mouse/Rat
<b>Formulation :</b>	Liquid in PBS containing 50% glycerol, 0.5% BSA and 0.02% sodium azide.
<b>Source :</b>	Polyclonal, Rabbit,IgG
<b>Dilution :</b>	WB 1:500-2000;IHC 1:50-300; ELISA 2000-20000
<b>Purification :</b>	The antibody was affinity-purified from rabbit antiserum by affinity-

chromatography using epitope-specific immunogen.

**Concentration :** 1 mg/ml

**Storage Stability :** -15°C to -25°C/1 year(Do not lower than -25°C)

**Molecularweight :** 33kD

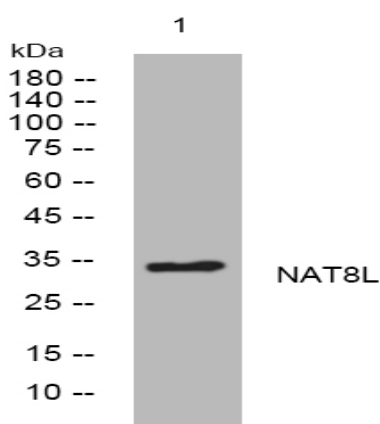
**Background :** This gene encodes a single-pass membrane protein, which contains a conserved sequence of the GCN5 or NAT superfamily of N-acetyltransferases and is a member of the N-acyltransferase (NAT) superfamily. This protein is a neuron-specific protein and is the N-acetylaspartate (NAA) biosynthetic enzyme, catalyzing the NAA synthesis from L-aspartate and acetyl-CoA. NAA is a major storage and transport form of acetyl coenzyme A specific to the nervous system. The gene mutation results in primary NAA deficiency (hypoacetylaspartia). [provided by RefSeq, Dec 2010],

**Function :** similarity:Belongs to the camello family.,similarity:Contains 1 N-acetyltransferase domain.,

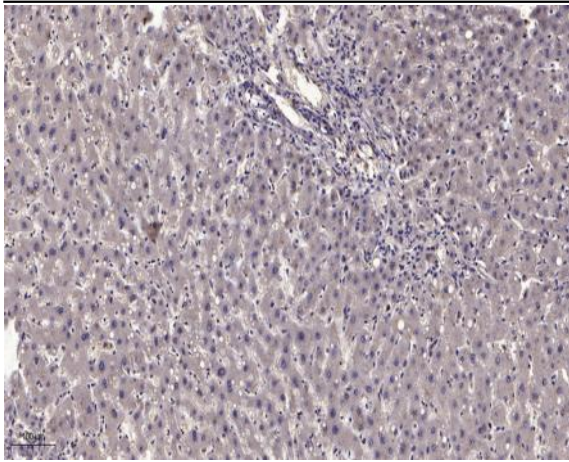
**Subcellular Location :** Cytoplasm . Microsome membrane ; Single-pass membrane protein . Mitochondrion membrane ; Single-pass membrane protein . Endoplasmic reticulum membrane ; Single-pass membrane protein . Its enzymatic activity contribution is quantitatively larger in mitochondrial compartment than in extramitochondrial compartment. .

**Expression :** Expressed in brain.

## Products Images



Western blot analysis of lysates from U2OS cells, primary antibody was diluted at 1:1000, 4° over night



Immunohistochemical analysis of paraffin-embedded human liver cancer. 1, Antibody was diluted at 1:200(4° overnight). 2, Tris-EDTA,pH9.0 was used for antigen retrieval. 3,Secondary antibody was diluted at 1:200(room temperature, 45min).