

## TMX2 rabbit pAb

<b>Catalog No :</b>	YT6690
<b>Reactivity :</b>	Human;Mouse;Rat
<b>Applications :</b>	WB
<b>Target :</b>	TMX2
<b>Gene Name :</b>	TMX2 TXNDC14 CGI-31 My009 PIG26 PSEC0045 UNQ237/PRO270
<b>Protein Name :</b>	TMX2
<b>Human Gene Id :</b>	51075
<b>Human Swiss Prot No :</b>	Q9Y320
<b>Mouse Gene Id :</b>	66958
<b>Mouse Swiss Prot No :</b>	Q9D710
<b>Rat Gene Id :</b>	295701
<b>Rat Swiss Prot No :</b>	Q5XIK2
<b>Immunogen :</b>	Synthesized peptide derived from human TMX2 AA range: 41-91
<b>Specificity :</b>	This antibody detects endogenous levels of TMX2 at Human/Mouse/Rat
<b>Formulation :</b>	Liquid in PBS containing 50% glycerol, 0.5% BSA and 0.02% sodium azide.
<b>Source :</b>	Polyclonal, Rabbit,IgG
<b>Dilution :</b>	WB 1:500-2000
<b>Purification :</b>	The antibody was affinity-purified from rabbit antiserum by affinity-chromatography using epitope-specific immunogen.

**Concentration :** 1 mg/ml

**Storage Stability :** -15°C to -25°C/1 year(Do not lower than -25°C)

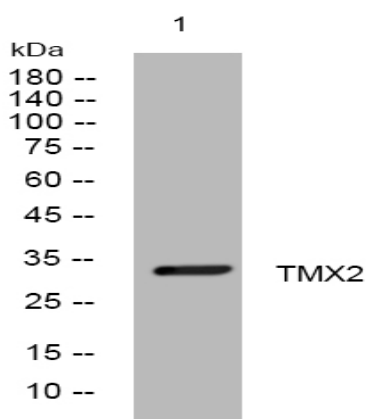
**Molecularweight :** 33kD

**Function :** domain:The di-lysine motif confers endoplasmic reticulum localization for type I membrane proteins.,domain:The thioredoxin domain lacks the 2 redox-active cysteines, suggesting that it lacks thioredoxin activity.,similarity:Contains 1 thioredoxin domain.,tissue specificity:Widely expressed.,

**Subcellular Location :** Endoplasmic reticulum membrane ; Single-pass type I membrane protein . Mitochondrion membrane . Localizes to endoplasmic reticulum mitochondria-associated membrane (MAMs) that connect the endoplasmic reticulum and the mitochondria. .

**Expression :** Widely expressed.

## Products Images



Western blot analysis of lysates from SW480 cells, primary antibody was diluted at 1:1000, 4° over night