

## ARFRP rabbit pAb

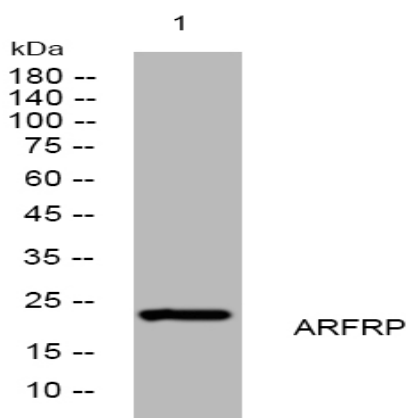
<b>Catalog No :</b>	YT6688
<b>Reactivity :</b>	Human;Mouse;Rat
<b>Applications :</b>	WB
<b>Target :</b>	ARFRP
<b>Gene Name :</b>	ARFRP1 ARP1
<b>Protein Name :</b>	ARFRP
<b>Human Gene Id :</b>	10139
<b>Human Swiss Prot No :</b>	Q13795
<b>Mouse Gene Id :</b>	76688
<b>Mouse Swiss Prot No :</b>	Q8BXL7
<b>Rat Gene Id :</b>	117051
<b>Rat Swiss Prot No :</b>	Q63055
<b>Immunogen :</b>	Synthesized peptide derived from human ARFRP AA range: 110-160
<b>Specificity :</b>	This antibody detects endogenous levels of ARFRP at Human/Mouse/Rat
<b>Formulation :</b>	Liquid in PBS containing 50% glycerol, 0.5% BSA and 0.02% sodium azide.
<b>Source :</b>	Polyclonal, Rabbit,IgG
<b>Dilution :</b>	WB 1:500-2000
<b>Purification :</b>	The antibody was affinity-purified from rabbit antiserum by affinity-chromatography using epitope-specific immunogen.

---

<b>Concentration :</b>	1 mg/ml
<b>Storage Stability :</b>	-15°C to -25°C/1 year(Do not lower than -25°C)
<b>Molecularweight :</b>	22kD
<b>Background :</b>	The protein encoded by this gene is a membrane-associated GTP-ase which localizes to the plasma membrane and is related to the ADP-ribosylation factor (ARF) and ARF-like (ARL) proteins. This gene plays a role in membrane trafficking between the trans-Golgi network and endosomes. Alternatively spliced transcript variants encoding different isoforms have been identified. [provided by RefSeq, May 2012],
<b>Function :</b>	function:Possibly involved in plasma membrane-related signaling events.,similarity:Belongs to the small GTPase superfamily. Arf family.,subunit:Interacts with SYS1.,tissue specificity:Found in most tissues.,
<b>Subcellular Location :</b>	Golgi apparatus . Golgi apparatus, trans-Golgi network . Located in the trans-Golgi in the GTP-bound active state. .
<b>Expression :</b>	Found in most tissues.

---

## Products Images



Western blot analysis of lysates from HeLa cells, primary antibody was diluted at 1:1000, 4° over night