

XIRP1 rabbit pAb

Catalog No :	YT6686
Reactivity :	Human;Mouse
Applications :	WB
Target :	XIRP1
Gene Name :	XIRP1 CMYA1 XIN
Protein Name :	XIRP1
Human Gene Id :	165904
Human Swiss Prot No :	Q702N8
Mouse Swiss Prot No :	O70373
Immunogen :	Synthesized peptide derived from human XIRP1 AA range: 1-51
Specificity :	This antibody detects endogenous levels of XIRP1 at Human/Mouse
Formulation :	Liquid in PBS containing 50% glycerol, 0.5% BSA and 0.02% sodium azide.
Source :	Polyclonal, Rabbit,IgG
Dilution :	WB 1:500-2000
Purification :	The antibody was affinity-purified from rabbit antiserum by affinity-chromatography using epitope-specific immunogen.
Concentration :	1 mg/ml
Storage Stability :	-15°C to -25°C/1 year(Do not lower than -25°C)
Molecularweight :	203kD

Function :

domain:Xin repeats bind F-actin.,function:Protects actin filaments from depolymerization.,miscellaneous:'Xin' means 'heart' in Chinese.,similarity:Belongs to the Xin family.,similarity:Contains 17 Xin repeats.,subcellular location:Colocalizes with actin stress fibers.,subunit:Interacts with CTNNB1 (By similarity). Interacts with F-actin, FLNC and VASP.,tissue specificity:Isoform A, isoform B and isoform C are expressed in heart.,

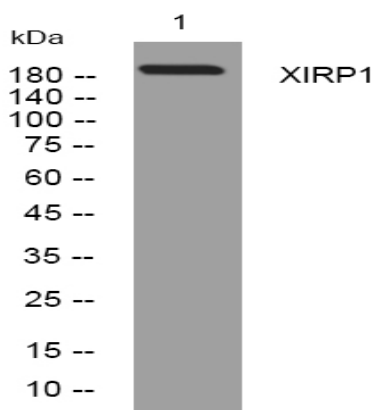
Subcellular Location :

Cell junction . Colocalizes with actin stress fibers.

Expression :

Isoform A, isoform B and isoform C are expressed in heart.

Products Images



Western blot analysis of lysates from A431 cells, primary antibody was diluted at 1:1000, 4° over night