

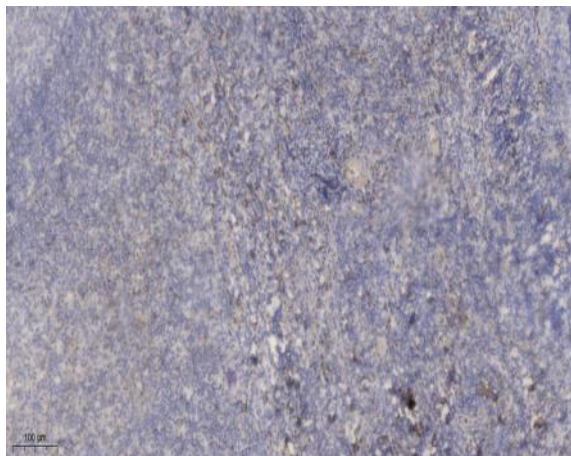
CE046 rabbit pAb

| | |
|------------------------------|---|
| Catalog No : | YT6682 |
| Reactivity : | Human;Mouse |
| Applications : | IHC;IF |
| Target : | CE046 |
| Gene Name : | C5orf46 UNQ472/PRO839 |
| Protein Name : | CE046 |
| Human Gene Id : | 389336 |
| Human Swiss Prot No : | Q6UWT4 |
| Mouse Gene Id : | 225443 |
| Mouse Swiss Prot No : | Q3V2D2 |
| Immunogen : | Synthesized peptide derived from human CE046 AA range: 22-72 |
| Specificity : | This antibody detects endogenous levels of CE046 at Human/Mouse |
| Formulation : | Liquid in PBS containing 50% glycerol, 0.5% BSA and 0.02% sodium azide. |
| Source : | Polyclonal, Rabbit,IgG |
| Dilution : | IHC 1:50-200. IF 1:50-200 |
| Purification : | The antibody was affinity-purified from rabbit antiserum by affinity-chromatography using epitope-specific immunogen. |
| Concentration : | 1 mg/ml |
| Storage Stability : | -15°C to -25°C/1 year(Do not lower than -25°C) |

Molecularweight : 10kD

Subcellular Location : Secreted .

Products Images



Immunohistochemical analysis of paraffin-embedded human tonsil. 1, Antibody was diluted at 1:200(4° overnight). 2, Tris-EDTA,pH9.0 was used for antigen retrieval. 3,Secondary antibody was diluted at 1:200(room temperature, 30min).