

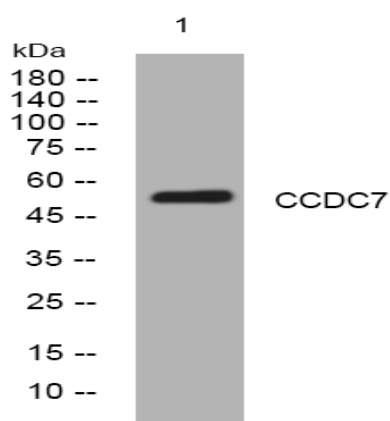
CCDC7 rabbit pAb

Catalog No :	YT6680
Reactivity :	Human;Mouse
Applications :	WB
Target :	CCDC7
Gene Name :	CCDC7 BIOT2
Protein Name :	CCDC7
Human Gene Id :	221016
Human Swiss Prot No :	Q96M83
Mouse Gene Id :	74703
Mouse Swiss Prot No :	Q9D541
Immunogen :	Synthesized peptide derived from human CCDC7 AA range: 380-430
Specificity :	This antibody detects endogenous levels of CCDC7 at Human/Mouse
Formulation :	Liquid in PBS containing 50% glycerol, 0.5% BSA and 0.02% sodium azide.
Source :	Polyclonal, Rabbit,IgG
Dilution :	WB 1[?]500-2000
Purification :	The antibody was affinity-purified from rabbit antiserum by affinity-chromatography using epitope-specific immunogen.
Concentration :	1 mg/ml
Storage Stability :	-15°C to -25°C/1 year(Do not lower than -25°C)

Molecularweight : 53kD

Expression : Expressed in epithelium of normal cervix and cervical cancer. Overexpressed in early and interim cervical cancer.

Products Images



Western blot analysis of lysates from HEK293 cells, primary antibody was diluted at 1:1000, 4° over night