

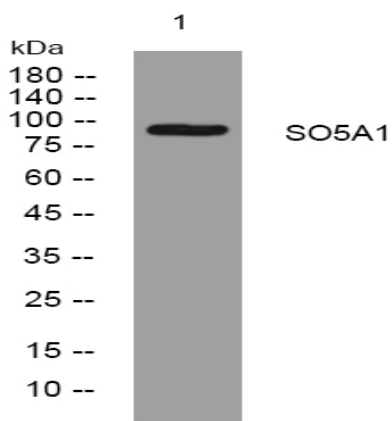
## SO5A1 rabbit pAb

<b>Catalog No :</b>	YT6678
<b>Reactivity :</b>	Human
<b>Applications :</b>	WB;IHC
<b>Target :</b>	SO5A1
<b>Gene Name :</b>	SLCO5A1 OATP5A1 SLC21A15
<b>Protein Name :</b>	SO5A1
<b>Human Gene Id :</b>	81796
<b>Human Swiss Prot No :</b>	Q9H2Y9
<b>Immunogen :</b>	Synthesized peptide derived from human SO5A1 AA range: 292-342
<b>Specificity :</b>	This antibody detects endogenous levels of SO5A1 at Human
<b>Formulation :</b>	Liquid in PBS containing 50% glycerol, 0.5% BSA and 0.02% sodium azide.
<b>Source :</b>	Polyclonal, Rabbit,IgG
<b>Dilution :</b>	WB 1:500-2000;IHC 1:50-300
<b>Purification :</b>	The antibody was affinity-purified from rabbit antiserum by affinity-chromatography using epitope-specific immunogen.
<b>Concentration :</b>	1 mg/ml
<b>Storage Stability :</b>	-15°C to -25°C/1 year(Do not lower than -25°C)
<b>Molecularweight :</b>	93kD
<b>Background :</b>	This gene encodes a 12 transmembrane domain protein that is a member of the solute carrier organic anion transporter superfamily. Alternative splicing results in multiple transcript variants. [provided by RefSeq, Mar 2009],

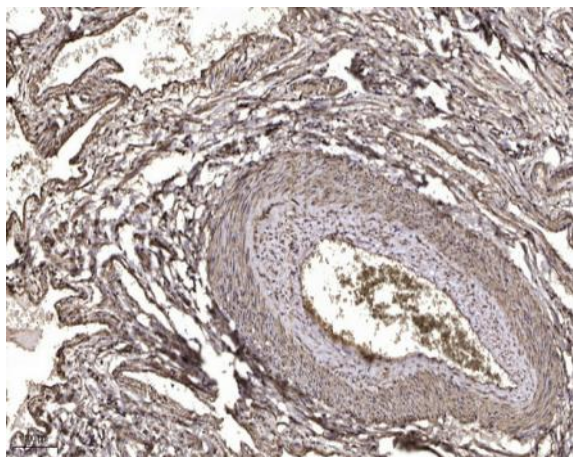
**Function :** similarity:Belongs to the organo anion transporter (TC 2.A.60) family.,

**Subcellular Location :** Cell membrane; Multi-pass membrane protein.

## Products Images



Western blot analysis of lysates from HEK293 cells, primary antibody was diluted at 1:1000, 4° over night



Immunohistochemical analysis of paraffin-embedded human oophoroma. 1, Antibody was diluted at 1:200(4° overnight). 2, Tris-EDTA,pH9.0 was used for antigen retrieval. 3,Secondary antibody was diluted at 1:200(room temperature, 45min).