

## VP37C rabbit pAb

<b>Catalog No :</b>	YT6677
<b>Reactivity :</b>	Human;Mouse
<b>Applications :</b>	WB
<b>Target :</b>	VP37C
<b>Fields :</b>	>>Endocytosis
<b>Gene Name :</b>	VPS37C PML39
<b>Protein Name :</b>	VP37C
<b>Human Gene Id :</b>	55048
<b>Human Swiss Prot No :</b>	A5D8V6
<b>Mouse Gene Id :</b>	107305
<b>Mouse Swiss Prot No :</b>	Q8R105
<b>Immunogen :</b>	Synthesized peptide derived from human VP37C AA range: 220-270
<b>Specificity :</b>	This antibody detects endogenous levels of VP37C at Human/Mouse
<b>Formulation :</b>	Liquid in PBS containing 50% glycerol, 0.5% BSA and 0.02% sodium azide.
<b>Source :</b>	Polyclonal, Rabbit,IgG
<b>Dilution :</b>	WB 1[?]500-2000
<b>Purification :</b>	The antibody was affinity-purified from rabbit antiserum by affinity-chromatography using epitope-specific immunogen.
<b>Concentration :</b>	1 mg/ml

**Storage Stability :** -15°C to -25°C/1 year(Do not lower than -25°C)

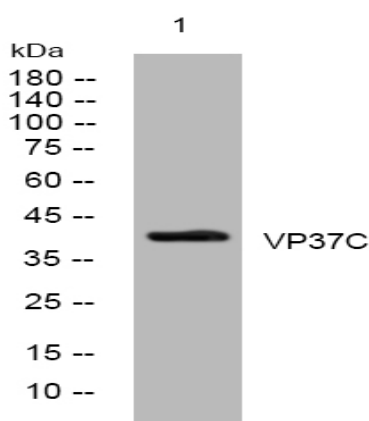
**Molecularweight :** 39kD

**Background :** VPS37C is a subunit of ESCRT-I (endosomal sorting complex required for transport I), a complex in the class E vacuolar protein sorting (VPS) pathway required for sorting ubiquitinated transmembrane proteins into internal vesicles of multivesicular bodies (Eastman et al., 2005 [PubMed 15509564]).[supplied by OMIM, Mar 2008],

**Function :** function:Component of the ESCRT-I complex, a regulator of vesicular trafficking process. Required for the sorting of endocytic ubiquitinated cargos into multivesicular bodies. May be involved in cell growth and differentiation.,similarity:Belongs to the VPS37 family.,similarity:Contains 1 VPS37 C-terminal domain.,subcellular location:Probably associates with membranes. Recruited to the plasma membrane by HIV-1.,subunit:Component of the ESCRT-I complex (endosomal sorting complex required for transport I) which consists of TSG101, VPS28, a VPS37 protein (VPS37A to -D) and a FAM125/MVB12 protein (FAM125A or -B) in a 1:1:1:1 stoichiometry. Interacts with TSG101, VPS28, FAM125A and FAM125B. Interacts with HGS and STAM2. Interacts with CEP55.,

**Subcellular Location :** Late endosome membrane ; Peripheral membrane protein . Probably associates with membranes. Recruited to the plasma membrane by HIV-1.

## Products Images



Western blot analysis of lysates from AD293 cells, primary antibody was diluted at 1:1000, 4° over night