

## TWF1 rabbit pAb

<b>Catalog No :</b>	YT6671
<b>Reactivity :</b>	Human;Mouse;Rat
<b>Applications :</b>	WB
<b>Target :</b>	TWF1
<b>Gene Name :</b>	TWF1 PTK9
<b>Protein Name :</b>	TWF1
<b>Human Gene Id :</b>	5756
<b>Human Swiss Prot No :</b>	Q12792
<b>Mouse Gene Id :</b>	19230
<b>Mouse Swiss Prot No :</b>	Q91YR1
<b>Rat Gene Id :</b>	315265
<b>Rat Swiss Prot No :</b>	Q5RJR2
<b>Immunogen :</b>	Synthesized peptide derived from human TWF1 AA range: 179-229
<b>Specificity :</b>	This antibody detects endogenous levels of TWF1 at Human/Mouse/Rat
<b>Formulation :</b>	Liquid in PBS containing 50% glycerol, 0.5% BSA and 0.02% sodium azide.
<b>Source :</b>	Polyclonal, Rabbit,IgG
<b>Dilution :</b>	WB 1:500-2000
<b>Purification :</b>	The antibody was affinity-purified from rabbit antiserum by affinity-chromatography using epitope-specific immunogen.

**Concentration :** 1 mg/ml

**Storage Stability :** -15°C to -25°C/1 year(Do not lower than -25°C)

**Molecularweight :** 39kD

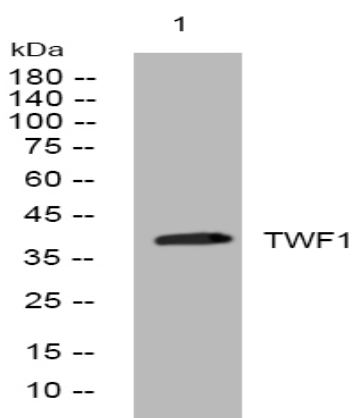
**Background :** This gene encodes twinfilin, an actin monomer-binding protein conserved from yeast to mammals. Studies of the mouse counterpart suggest that this protein may be an actin monomer-binding protein, and its localization to cortical G-actin-rich structures may be regulated by the small GTPase RAC1. [provided by RefSeq, Jul 2008],

**Function :** caution:Was originally (PubMed:7507208) thought to have protein tyrosine kinase activity.,function:Actin-binding protein involved in motile and morphological processes. Inhibits actin polymerization, likely by sequestering G-actin. By capping the barbed ends of filaments, it also regulates motility. Seems to play an important role in clathrin-mediated endocytosis and distribution of endocytic organelles.,online information:Molecular embrace -Issue 73 of August 2006,PTM:Phosphorylated on serine and threonine residues.,similarity:Belongs to the actin-binding proteins ADF family. Twinfilin subfamily.,similarity:Contains 2 ADF-H domains.,subcellular location:Diffuse cytoplasmic localization with perinuclear and G-actin-rich cortical actin structures sublocalization. Also found at membrane ruffles and cell-cell contacts.,subunit:Interacts with G-actin; ADP-actin form and capping protein (CP).

**Subcellular Location :** Cytoplasm. Cytoplasm, cytoskeleton . Diffuse cytoplasmic localization with perinuclear and G-actin-rich cortical actin structures sublocalization. Also found at membrane ruffles and cell-cell contacts (By similarity). .

**Expression :** Expressed at high levels in the colon, testis, ovary, prostate and lung. Expressed at lower levels in the brain, bladder and heart. Not detected in liver.

## Products Images



Western blot analysis of lysates from MCF-7 cells, primary antibody was diluted at 1:1000, 4° over night