

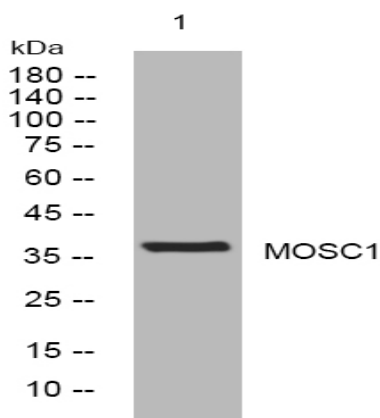
MOSC1 rabbit pAb

Catalog No :	YT6667
Reactivity :	Human;Mouse
Applications :	WB;ELISA;IHC
Target :	MOSC1
Gene Name :	MARC1 MOSC1
Protein Name :	MOSC1
Human Gene Id :	64757
Human Swiss Prot No :	Q5VT66
Mouse Swiss Prot No :	Q9CW42
Immunogen :	Synthesized peptide derived from human MOSC1 AA range: 156-206
Specificity :	This antibody detects endogenous levels of MOSC1 at Human/Mouse
Formulation :	Liquid in PBS containing 50% glycerol, 0.5% BSA and 0.02% sodium azide.
Source :	Polyclonal, Rabbit,IgG
Dilution :	WB 1:500-2000;IHC 1:50-300; ELISA 2000-20000
Purification :	The antibody was affinity-purified from rabbit antiserum by affinity-chromatography using epitope-specific immunogen.
Concentration :	1 mg/ml
Storage Stability :	-15°C to -25°C/1 year(Do not lower than -25°C)
Molecularweight :	37kD

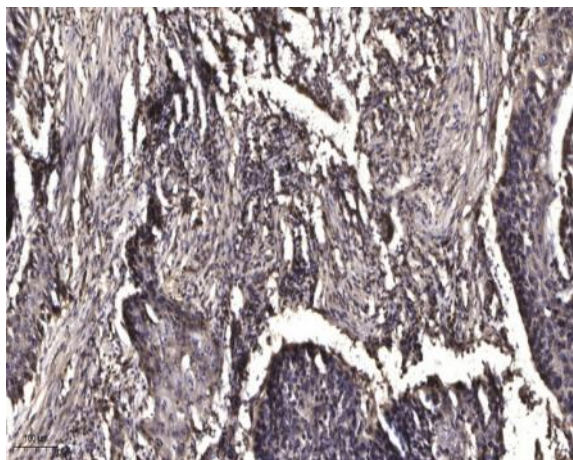
Function : cofactor:Molybdenum.,function:Probable oxidoreductase.,similarity:Contains 1 MOSC domain.,

Subcellular Location : Mitochondrion outer membrane ; Single-pass type II membrane protein . Membrane ; Lipid-anchor . Mitochondrial import is mediated by AA 1-40 and requires ATP.

Products Images



Western blot analysis of lysates from 3T3 cells, primary antibody was diluted at 1:1000, 4° over night



Immunohistochemical analysis of paraffin-embedded human Squamous cell carcinoma of lung. 1, Antibody was diluted at 1:200(4° overnight). 2, Tris-EDTA,pH9.0 was used for antigen retrieval. 3,Secondary antibody was diluted at 1:200(room temperature, 45min).