

LHPP rabbit pAb

Catalog No :	YT6658
Reactivity :	Human;Mouse;Rat
Applications :	WB;IHC
Target :	LHPP
Fields :	>>Oxidative phosphorylation
Gene Name :	LHPP
Protein Name :	LHPP
Human Gene Id :	64077
Human Swiss Prot No :	Q9H008
Mouse Gene Id :	76429
Mouse Swiss Prot No :	Q9D7I5
Rat Gene Id :	361663
Rat Swiss Prot No :	Q5I0D5
Immunogen :	Synthesized peptide derived from human LHPP AA range: 140-190
Specificity :	This antibody detects endogenous levels of LHPP at Human/Mouse/Rat
Formulation :	Liquid in PBS containing 50% glycerol, 0.5% BSA and 0.02% sodium azide.
Source :	Polyclonal, Rabbit,IgG
Dilution :	WB 1:500-2000;IHC 1:50-300
Purification :	The antibody was affinity-purified from rabbit antiserum by affinity-

chromatography using epitope-specific immunogen.

Concentration : 1 mg/ml

Storage Stability : -15°C to -25°C/1 year(Do not lower than -25°C)

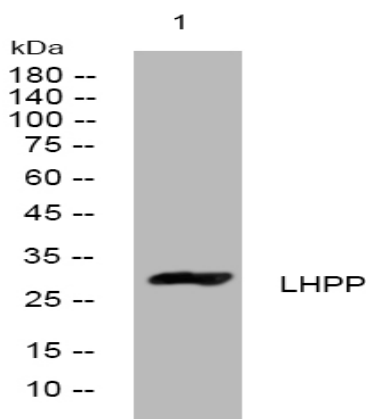
Molecularweight : 30kD

Function : catalytic activity:Diphosphate + H(2)O = 2 phosphate.,similarity:Belongs to the HAD-like hydrolase superfamily.,subunit:Homodimer.,tissue specificity:Expressed in liver, kidney and moderately in brain.,

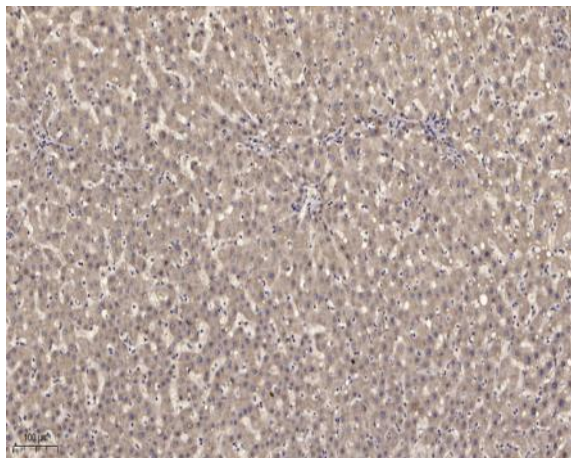
Subcellular Location : Cytoplasm . Nucleus .

Expression : Expressed in brain, and at lower levels in liver and kidney. Detected in thyroid (at protein level). Expressed in liver, kidney and moderately in brain.

Products Images



Western blot analysis of lysates from HuvEc cells, primary antibody was diluted at 1:1000, 4° over night



Immunohistochemical analysis of paraffin-embedded human liver cancer. 1, Antibody was diluted at 1:200(4° overnight). 2, Tris-EDTA,pH9.0 was used for antigen retrieval. 3,Secondary antibody was diluted at 1:200(room temperature, 45min).