

ITM2C rabbit pAb

Catalog No :	YT6651
Reactivity :	Human;Mouse;Rat
Applications :	WB;IHC
Target :	ITM2C
Gene Name :	ITM2C BRI3 hucep-14 NPD018 PSEC0047
Protein Name :	ITM2C
Human Gene Id :	81618
Human Swiss Prot No :	Q9NQX7
Mouse Gene Id :	64294
Mouse Swiss Prot No :	Q91VK4
Rat Gene Id :	301575
Rat Swiss Prot No :	Q5PQL7
Immunogen :	Synthesized peptide derived from human ITM2C AA range: 1-51
Specificity :	This antibody detects endogenous levels of ITM2C at Human/Mouse/Rat
Formulation :	Liquid in PBS containing 50% glycerol, 0.5% BSA and 0.02% sodium azide.
Source :	Polyclonal, Rabbit,IgG
Dilution :	WB 1:500-2000;IHC 1:50-300
Purification :	The antibody was affinity-purified from rabbit antiserum by affinity-chromatography using epitope-specific immunogen.

Concentration : 1 mg/ml

Storage Stability : -15°C to -25°C/1 year(Do not lower than -25°C)

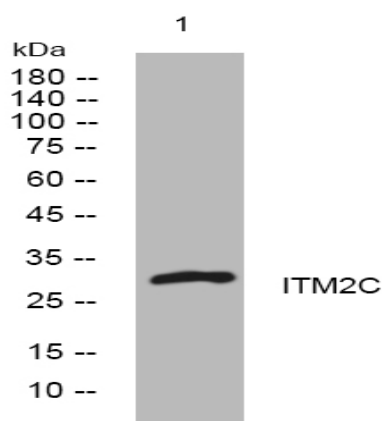
Molecularweight : 29kD

Function : PTM:Type I membrane-bound, as well as soluble, furin has a pre-eminent role in ITM2C proteolytic processing. PCSK7 and PCSK5 may also be involved although to a lesser extent. The soluble form of PCSK7 is incapable of processing ITM2C.,similarity:Belongs to the ITM2 family.,similarity:Contains 1 BRICHOS domain.,subunit:Interacts with BACE1.,tissue specificity:High levels in the brain, specifically in the cerebral cortex, medulla, amygdala, hippocampus, thalamus, caudate nucleus, cerebellum, olfactory lobe and spinal cord. Very low levels in other organs.,

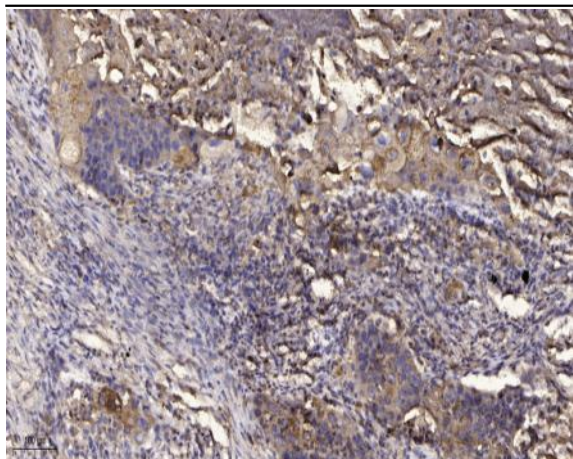
Subcellular Location : Lysosome membrane ; Single-pass type II membrane protein . Cell membrane ; Single-pass type II membrane protein .

Expression : High levels in the brain, specifically in the cerebral cortex, medulla, amygdala, hippocampus, thalamus, caudate nucleus, cerebellum, olfactory lobe and spinal cord. Very low levels in other organs.

Products Images



Western blot analysis of lysates from MDA-MB cells, primary antibody was diluted at 1:1000, 4° over night



Immunohistochemical analysis of paraffin-embedded human Squamous cell carcinoma of lung. 1, Antibody was diluted at 1:200(4° overnight). 2, Tris-EDTA,pH9.0 was used for antigen retrieval. 3,Secondary antibody was diluted at 1:200(room temperature, 45min).