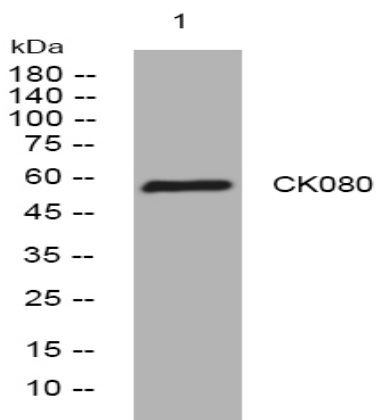


CK080 rabbit pAb

Catalog No :	YT6650
Reactivity :	Human;Mouse
Applications :	WB
Target :	CK080
Gene Name :	C11orf80
Protein Name :	CK080
Human Gene Id :	79703
Human Swiss Prot No :	Q8N6T0
Immunogen :	Synthesized peptide derived from human CK080 AA range: 93-143
Specificity :	This antibody detects endogenous levels of CK080 at Human
Formulation :	Liquid in PBS containing 50% glycerol, 0.5% BSA and 0.02% sodium azide.
Source :	Polyclonal, Rabbit,IgG
Dilution :	WB 1[?]500-2000
Purification :	The antibody was affinity-purified from rabbit antiserum by affinity-chromatography using epitope-specific immunogen.
Concentration :	1 mg/ml
Storage Stability :	-15°C to -25°C/1 year(Do not lower than -25°C)
Molecularweight :	57kD
Subcellular Location :	Chromosome . Localizes to meiotic chromosomes. .

Expression :

Detected in lung, spleen, colon and in skeletal muscle. Expressed in the ovaries, Fallopian tubes and uterus (PubMed:30388401).

Products Images

Western blot analysis of lysates from U2OS cells, primary antibody was diluted at 1:1000, 4° over night