

## QCR8 rabbit pAb

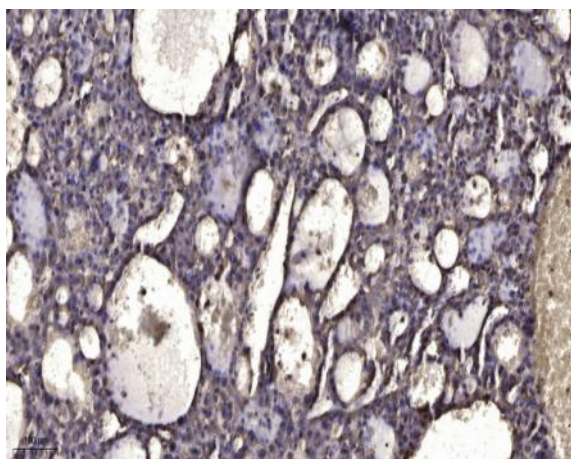
<b>Catalog No :</b>	YT6649
<b>Reactivity :</b>	Human;Mouse;Rat
<b>Applications :</b>	IHC;IF
<b>Target :</b>	QCR8
<b>Fields :</b>	>>Oxidative phosphorylation;>>Metabolic pathways;>>Cardiac muscle contraction;>>Thermogenesis;>>Non-alcoholic fatty liver disease;>>Alzheimer disease;>>Parkinson disease;>>Amyotrophic lateral sclerosis;>>Huntington disease;>>Prion disease;>>Pathways of neurodegeneration - multiple diseases;>>Chemical carcinogenesis - reactive oxygen species;>>Diabetic cardiomyopathy
<b>Gene Name :</b>	UQCRQ
<b>Protein Name :</b>	QCR8
<b>Human Gene Id :</b>	27089
<b>Human Swiss Prot No :</b>	O14949
<b>Mouse Gene Id :</b>	22272
<b>Mouse Swiss Prot No :</b>	Q9CQ69
<b>Rat Gene Id :</b>	497902
<b>Rat Swiss Prot No :</b>	Q7TQ16
<b>Immunogen :</b>	Synthesized peptide derived from human QCR8 AA range: 2-52
<b>Specificity :</b>	This antibody detects endogenous levels of QCR8 at Human/Mouse/Rat
<b>Formulation :</b>	Liquid in PBS containing 50% glycerol, 0.5% BSA and 0.02% sodium azide.
<b>Source :</b>	Polyclonal, Rabbit,IgG

---

<b>Dilution :</b>	IHC 1:50-200. IF 1:50-200
<b>Purification :</b>	The antibody was affinity-purified from rabbit antiserum by affinity-chromatography using epitope-specific immunogen.
<b>Concentration :</b>	1 mg/ml
<b>Storage Stability :</b>	-15°C to -25°C/1 year(Do not lower than -25°C)
<b>Molecularweight :</b>	9kD
<b>Background :</b>	This gene encodes a ubiquinone-binding protein of low molecular mass. This protein is a small core-associated protein and a subunit of ubiquinol-cytochrome c reductase complex III, which is part of the mitochondrial respiratory chain. [provided by RefSeq, Jul 2008],
<b>Function :</b>	disease:Defects in UQCRQ are a cause of mitochondrial complex III deficiency (CIII deficiency) [MIM:124000]. Affected individuals display severe psychomotor retardation and extrapyramidal signs. Neurologic features include dystonia, athetoid movements, ataxia, mild axial hypotonia, increased tone, hyperreflexia, and inability to walk unsupported. Serum lactate is mildly elevated and muscle biopsies show a reduction in mitochondrial complex III activity.,function:This is a component of the ubiquinol-cytochrome c reductase complex (complex III or cytochrome b-c1 complex), which is part of the mitochondrial respiratory chain. This subunit, together with cytochrome b, binds to ubiquinone.,similarity:Belongs to the UQCRQ/QCR8 family.,subunit:The bc1 complex contains 11 subunits: 3 respiratory subunits (cytochrome b, cytochrome c1 and Rieske/UQCRFS1), 2 core proteins (UQCRC1/QCR1 and UQCRC2/QC
<b>Subcellular Location :</b>	Mitochondrion inner membrane ; Single-pass membrane protein .

---

## Products Images



Immunohistochemical analysis of paraffin-embedded human liver cancer. 1, Antibody was diluted at 1:200(4° overnight). 2, Tris-EDTA,pH9.0 was used for antigen retrieval. 3,Secondary antibody was diluted at 1:200(room temperature, 45min).