

ZN165 rabbit pAb

Catalog No :	YT6647
Reactivity :	Human
Applications :	WB
Target :	ZN165
Gene Name :	ZNF165 ZPF165 ZSCAN7
Protein Name :	ZN165
Human Gene Id :	7718
Human Swiss Prot No :	P49910
Immunogen :	Synthesized peptide derived from human ZN165 AA range: 200-250
Specificity :	This antibody detects endogenous levels of ZN165 at Human
Formulation :	Liquid in PBS containing 50% glycerol, 0.5% BSA and 0.02% sodium azide.
Source :	Polyclonal, Rabbit,IgG
Dilution :	WB 1[?]500-2000
Purification :	The antibody was affinity-purified from rabbit antiserum by affinity-chromatography using epitope-specific immunogen.
Concentration :	1 mg/ml
Storage Stability :	-15°C to -25°C/1 year(Do not lower than -25°C)
Molecularweight :	53kD
Background :	This gene encodes a member of the Kruppel family of zinc finger proteins. Members of this DNA-binding protein family act as transcriptional regulators. This gene is located within a cluster of zinc finger family members. The encoded

protein may play a role in spermatogenesis. [provided by RefSeq, Jul 2008],

Function :

function:May be involved in transcriptional regulation.,similarity:Belongs to the krueppel C2H2-type zinc-finger protein family.,similarity:Contains 1 SCAN box domain.,similarity:Contains 6 C2H2-type zinc fingers.,tissue specificity:Expressed specifically in testis.,

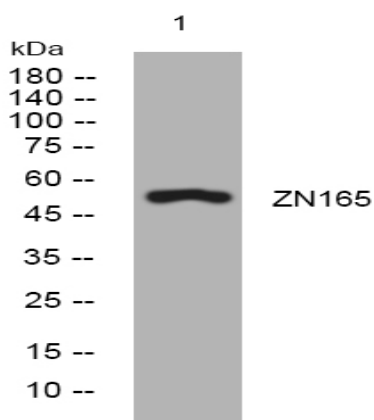
Subcellular Location :

Nucleus .

Expression :

Expressed specifically in testis.

Products Images



Western blot analysis of lysates from SW480 cells, primary antibody was diluted at 1:1000, 4° over night