

CETN1 rabbit pAb

Catalog No :	YT6644
Reactivity :	Human;Mouse
Applications :	WB
Target :	CETN1
Gene Name :	CETN1 CEN1 CETN
Protein Name :	CETN1
Human Gene Id :	1068
Human Swiss Prot No :	Q12798
Mouse Gene Id :	26369
Mouse Swiss Prot No :	P41209
Immunogen :	Synthesized peptide derived from human CETN1 AA range: 96-146
Specificity :	This antibody detects endogenous levels of CETN1 at Human/Mouse
Formulation :	Liquid in PBS containing 50% glycerol, 0.5% BSA and 0.02% sodium azide.
Source :	Polyclonal, Rabbit,IgG
Dilution :	WB 1:500-2000
Purification :	The antibody was affinity-purified from rabbit antiserum by affinity-chromatography using epitope-specific immunogen.
Concentration :	1 mg/ml
Storage Stability :	-15°C to -25°C/1 year(Do not lower than -25°C)

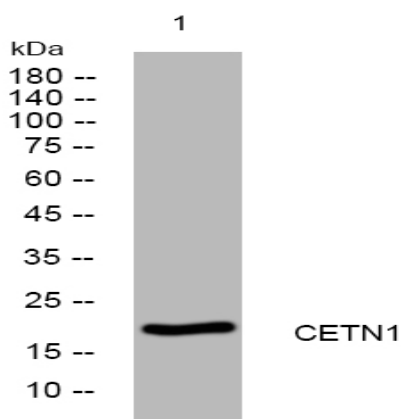
Molecularweight : 19kD

Background : The protein encoded by this gene plays important roles in the determination of centrosome position and segregation, and in the process of microtubule severing. This protein is localized to the centrosome of interphase cells, and redistributes to the region of the spindle poles during mitosis, reflecting the dynamic behavior of the centrosome during the cell cycle. [provided by RefSeq, Jan 2015],

Function : function:Plays a fundamental role in microtubule-organizing center structure and function.,miscellaneous:Binds two moles of calcium per mole of protein.,similarity:Belongs to the centrin family.,similarity:Contains 4 EF-hand domains.,subcellular location:Centrosome of interphase and mitotic cells.,subunit:Monomer.,

Subcellular Location : Cytoplasm, cytoskeleton, microtubule organizing center, centrosome . Cell projection, cilium . Centrosome of interphase and mitotic cells. In the retinal photoreceptor cells, localizes at the connecting cilium, a thin bridge linking the cell body and the light-sensing outer segment (By similarity) .

Products Images



Western blot analysis of lysates from K562 cells, primary antibody was diluted at 1:1000, 4° over night