

PED1A rabbit pAb

| | |
|------------------------------|---|
| Catalog No : | YT6641 |
| Reactivity : | Human;Mouse |
| Applications : | WB |
| Target : | PED1A |
| Gene Name : | PCED1A C20orf81 FAM113A |
| Protein Name : | PED1A |
| Human Gene Id : | 64773 |
| Human Swiss Prot No : | Q9H1Q7 |
| Mouse Gene Id : | 319513 |
| Mouse Swiss Prot No : | Q6P1Z5 |
| Immunogen : | Synthesized peptide derived from human PED1A AA range: 14-64 |
| Specificity : | This antibody detects endogenous levels of PED1A at Human/Mouse |
| Formulation : | Liquid in PBS containing 50% glycerol, 0.5% BSA and 0.02% sodium azide. |
| Source : | Polyclonal, Rabbit,IgG |
| Dilution : | WB 1:500-2000 |
| Purification : | The antibody was affinity-purified from rabbit antiserum by affinity-chromatography using epitope-specific immunogen. |
| Concentration : | 1 mg/ml |
| Storage Stability : | -15°C to -25°C/1 year(Do not lower than -25°C) |

Molecularweight : 50kD

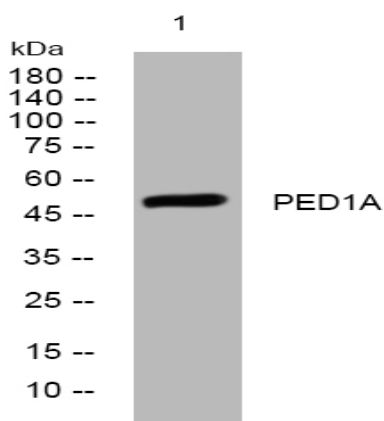
Background :

The protein encoded by this gene is a member of the GDSL/SGNH superfamily. Members of this family are hydrolytic enzymes with esterase and lipase activity and broad substrate specificity. This protein belongs to the Pmr5-Cas1p-esterase subfamily in that it contains the catalytic triad comprised of serine, aspartate and histidine and lacks two conserved regions (glycine after strand S2 and GxND motif). A pseudogene of this gene has been identified on the long arm of chromosome 2. Alternative splicing results in multiple transcript variants that encode different protein isoforms. [provided by RefSeq, Sep 2012],

Function :

similarity:Belongs to the FAM113 family.,

Products Images



Western blot analysis of lysates from 3T3 cells, primary antibody was diluted at 1:1000, 4° over night