

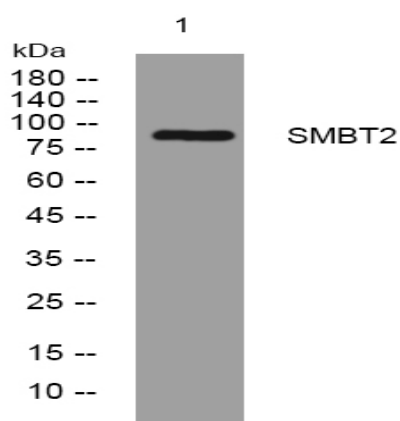
SMBT2 rabbit pAb

Catalog No :	YT6640
Reactivity :	Human;Mouse
Applications :	WB;IHC
Target :	SMBT2
Gene Name :	SFMBT2 KIAA1617
Protein Name :	SMBT2
Human Gene Id :	57713
Human Swiss Prot No :	Q5VUG0
Mouse Swiss Prot No :	Q5DTW2
Immunogen :	Synthesized peptide derived from human SMBT2 AA range: 156-206
Specificity :	This antibody detects endogenous levels of SMBT2 at Human/Mouse
Formulation :	Liquid in PBS containing 50% glycerol, 0.5% BSA and 0.02% sodium azide.
Source :	Polyclonal, Rabbit,IgG
Dilution :	WB 1:500-2000;IHC 1:50-300
Purification :	The antibody was affinity-purified from rabbit antiserum by affinity-chromatography using epitope-specific immunogen.
Concentration :	1 mg/ml
Storage Stability :	-15°C to -25°C/1 year(Do not lower than -25°C)
Molecularweight :	98kD

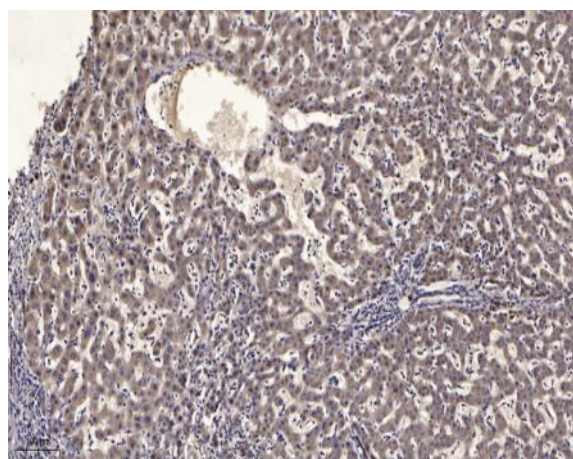
Function : similarity:Contains 1 SAM (sterile alpha motif) domain.,similarity:Contains 4 MBT repeats.,

Subcellular Location : Nucleus .

Products Images



Western blot analysis of lysates from HpeG2 cells, primary antibody was diluted at 1:1000, 4° over night



Immunohistochemical analysis of paraffin-embedded human liver cancer. 1, Antibody was diluted at 1:200(4° overnight). 2, Tris-EDTA,pH9.0 was used for antigen retrieval. 3,Secondary antibody was diluted at 1:200(room temperature, 45min).