

TMCC3 rabbit pAb

Catalog No :	YT6629
Reactivity :	Human;Mouse
Applications :	WB
Target :	TMCC3
Gene Name :	TMCC3 KIAA1145
Protein Name :	TMCC3
Human Gene Id :	57458
Human Swiss Prot No :	Q9ULS5
Mouse Gene Id :	319880
Mouse Swiss Prot No :	Q8R310
Immunogen :	Synthesized peptide derived from human TMCC3 AA range: 33-83
Specificity :	This antibody detects endogenous levels of TMCC3 at Human/Mouse
Formulation :	Liquid in PBS containing 50% glycerol, 0.5% BSA and 0.02% sodium azide.
Source :	Polyclonal, Rabbit,IgG
Dilution :	WB 1:500-2000
Purification :	The antibody was affinity-purified from rabbit antiserum by affinity-chromatography using epitope-specific immunogen.
Concentration :	1 mg/ml
Storage Stability :	-15°C to -25°C/1 year(Do not lower than -25°C)

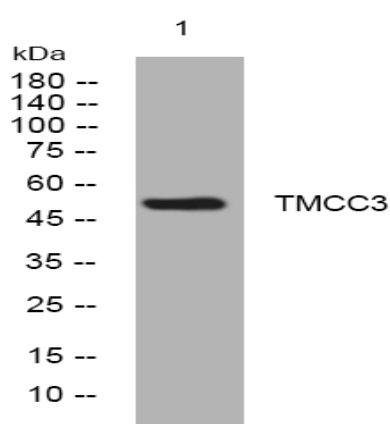
Molecularweight : 52kD

Function : similarity:Belongs to the TEX28 family.,

Subcellular Location : Endoplasmic reticulum membrane ; Multi-pass membrane protein . Concentrates in discrete patches along peripheral endoplasmic reticulum tubules. .

Expression : Widely expressed, with highest levels in brain, spinal cord and testis.

Products Images



Western blot analysis of lysates from THP-1 cells, primary antibody was diluted at 1:1000, 4° over night