

## PCOTH rabbit pAb

<b>Catalog No :</b>	YT6628
<b>Reactivity :</b>	Human
<b>Applications :</b>	IHC;IF
<b>Target :</b>	PCOTH
<b>Gene Name :</b>	PCOTH
<b>Protein Name :</b>	PCOTH
<b>Human Gene Id :</b>	542767
<b>Human Swiss Prot No :</b>	Q58A44
<b>Immunogen :</b>	Synthesized peptide derived from human PCOTH AA range: 14-64
<b>Specificity :</b>	This antibody detects endogenous levels of PCOTH at Human
<b>Formulation :</b>	Liquid in PBS containing 50% glycerol, 0.5% BSA and 0.02% sodium azide.
<b>Source :</b>	Polyclonal, Rabbit,IgG
<b>Dilution :</b>	IHC 1:50-200. IF 1:50-200
<b>Purification :</b>	The antibody was affinity-purified from rabbit antiserum by affinity-chromatography using epitope-specific immunogen.
<b>Concentration :</b>	1 mg/ml
<b>Storage Stability :</b>	-15°C to -25°C/1 year(Do not lower than -25°C)
<b>Molecularweight :</b>	12kD
<b>Function :</b>	function:May be involved in growth and survival of prostate cancer cells through the TAF-1beta pathway.,tissue specificity:Expressed in prostate and testis. Weakly or not expressed in other tissues. Overexpressed in prostate cancers.,

**Subcellular**Cytoplasm .

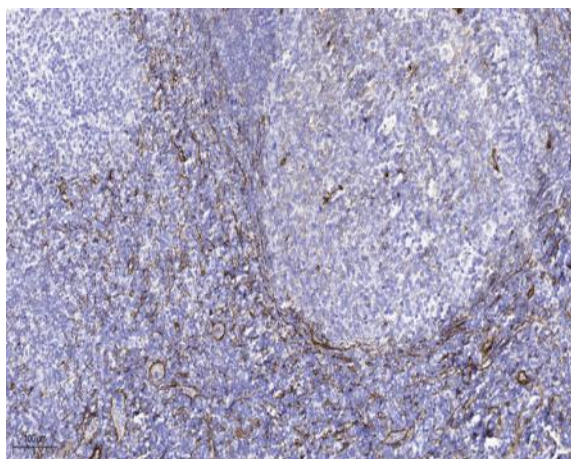
---

**Location :****Expression :**

Expressed in prostate and testis. Weakly or not expressed in other tissues.  
Overexpressed in prostate cancers.

---

## Products Images



Immunohistochemical analysis of paraffin-embedded human tonsil. 1, Tris-EDTA,pH9.0 was used for antigen retrieval. 2 Antibody was diluted at 1:200(4° overnight.3,Secondary antibody was diluted at 1:200(room temperature, 45min).