

## SHSA3 rabbit pAb

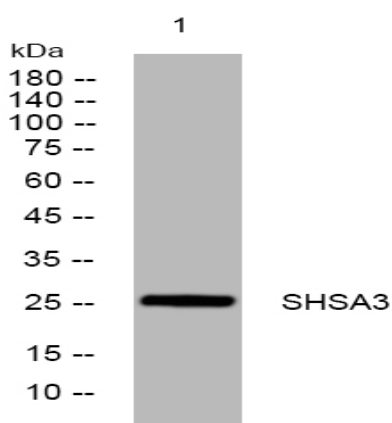
<b>Catalog No :</b>	YT6626
<b>Reactivity :</b>	Human;Mouse
<b>Applications :</b>	WB;ELISA;IHC
<b>Target :</b>	SHSA3
<b>Gene Name :</b>	SHISA3
<b>Protein Name :</b>	SHSA3
<b>Human Gene Id :</b>	152573
<b>Human Swiss Prot No :</b>	A0PJX4
<b>Mouse Gene Id :</b>	330096
<b>Mouse Swiss Prot No :</b>	Q3UPR0
<b>Immunogen :</b>	Synthesized peptide derived from human SHSA3 AA range: 126-176
<b>Specificity :</b>	This antibody detects endogenous levels of SHSA3 at Human/Mouse
<b>Formulation :</b>	Liquid in PBS containing 50% glycerol, 0.5% BSA and 0.02% sodium azide.
<b>Source :</b>	Polyclonal, Rabbit,IgG
<b>Dilution :</b>	WB 1:500-2000;IHC 1:50-300; ELISA 2000-20000
<b>Purification :</b>	The antibody was affinity-purified from rabbit antiserum by affinity-chromatography using epitope-specific immunogen.
<b>Concentration :</b>	1 mg/ml
<b>Storage Stability :</b>	-15°C to -25°C/1 year(Do not lower than -25°C)

**Molecularweight :** 26kD

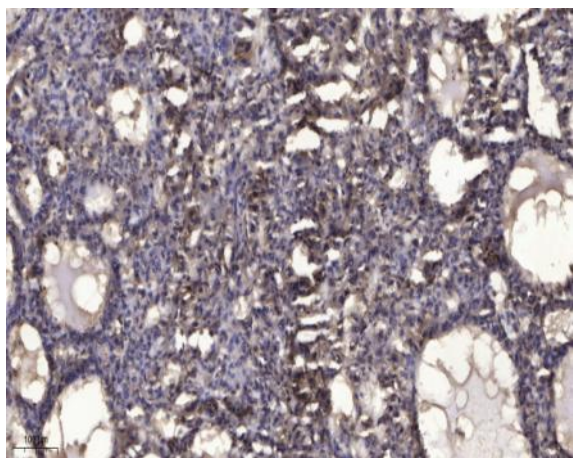
**Function :** function:Plays an essential role in the maturation of presomitic mesoderm cells by individual attenuation of both FGF and WNT signaling.,similarity:Belongs to the shisa protein family.,

**Subcellular Location :** Endoplasmic reticulum membrane ; Single-pass type I membrane protein .

## Products Images



Western blot analysis of lysates from HpeG2 cells, primary antibody was diluted at 1:1000, 4° over night



Immunohistochemical analysis of paraffin-embedded human liver cancer. 1, Antibody was diluted at 1:200(4° overnight). 2, Tris-EDTA,pH9.0 was used for antigen retrieval. 3,Secondary antibody was diluted at 1:200(room temperature, 45min).