

CE120 rabbit pAb

Catalog No :	YT6616
Reactivity :	Human;Mouse
Applications :	WB
Target :	CE120
Gene Name :	CEP120 CCDC100
Protein Name :	CE120
Human Gene Id :	153241
Human Swiss Prot No :	Q8N960
Mouse Gene Id :	225523
Mouse Swiss Prot No :	Q7TSG1
Immunogen :	Synthesized peptide derived from human CE120 AA range: 335-385
Specificity :	This antibody detects endogenous levels of CE120 at Human/Mouse
Formulation :	Liquid in PBS containing 50% glycerol, 0.5% BSA and 0.02% sodium azide.
Source :	Polyclonal, Rabbit,IgG
Dilution :	WB 1:500-2000
Purification :	The antibody was affinity-purified from rabbit antiserum by affinity-chromatography using epitope-specific immunogen.
Concentration :	1 mg/ml
Storage Stability :	-15°C to -25°C/1 year(Do not lower than -25°C)

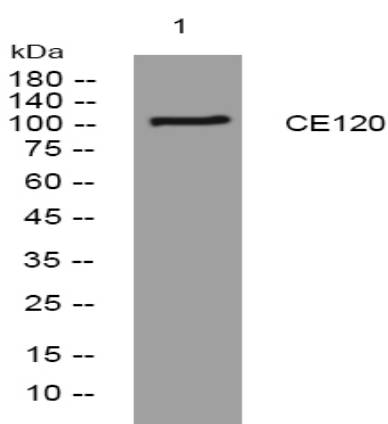
Molecularweight : 108kD

Background : This gene encodes a protein that functions in the microtubule-dependent coupling of the nucleus and the centrosome. A similar protein in mouse plays a role in both interkinetic nuclear migration, which is a characteristic pattern of nuclear movement in neural progenitors, and in neural progenitor self-renewal. Mutations in this gene are predicted to result in neurogenic defects. Alternative splicing results in multiple transcript variants. [provided by RefSeq, Oct 2009],

Function : function:Plays a role in the microtubule-dependent coupling of the nucleus and the centrosome. Involved in the processes that regulate centrosome-mediated interkinetic nuclear migration (INM) of neural progenitors and for proper positioning of neurons during brain development. Also implicated in the migration and selfrenewal of neural progenitors.,similarity:Belongs to the CEP120 family.,subcellular location:Regulates the localization of TACC3 to the centrosome in neural progenitors in vivo.,subunit:Interacts with TACC2 and TACC3.,

Subcellular Location : Cytoplasm, cytoskeleton, microtubule organizing center, centrosome . Regulates the localization of TACC3 to the centrosome in neural progenitors in vivo. .

Products Images



Western blot analysis of lysates from HpeG2 cells, primary antibody was diluted at 1:1000, 4° over night