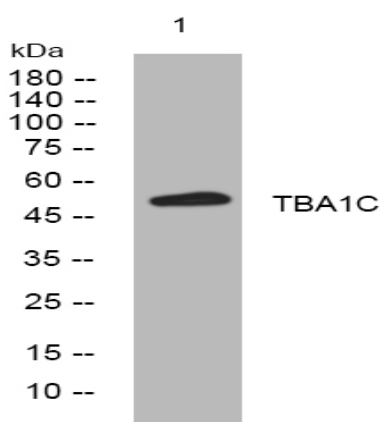


TBA1C rabbit pAb

Catalog No :	YT6615
Reactivity :	Human;Mouse;Rat
Applications :	WB
Target :	TBA1C
Fields :	>>Phagosome;>>Apoptosis;>>Tight junction;>>Gap junction;>>Alzheimer disease;>>Parkinson disease;>>Amyotrophic lateral sclerosis;>>Huntington disease;>>Prion disease;>>Pathways of neurodegeneration - multiple diseases;>>Pathogenic Escherichia coli infection;>>Salmonella infection
Gene Name :	TUBA1C TUBA6
Protein Name :	TBA1C
Human Gene Id :	84790
Human Swiss Prot No :	Q9BQE3
Mouse Gene Id :	22146
Mouse Swiss Prot No :	P68373
Rat Gene Id :	100909441
Rat Swiss Prot No :	Q6AYZ1
Immunogen :	Synthesized peptide derived from human TBA1C AA range: 337-387
Specificity :	This antibody detects endogenous levels of TBA1C at Human/Mouse/Rat
Formulation :	Liquid in PBS containing 50% glycerol, 0.5% BSA and 0.02% sodium azide.
Source :	Polyclonal, Rabbit,IgG
Dilution :	WB 1[?]500-2000

Purification :	The antibody was affinity-purified from rabbit antiserum by affinity-chromatography using epitope-specific immunogen.
Concentration :	1 mg/ml
Storage Stability :	-15°C to -25°C/1 year(Do not lower than -25°C)
Molecularweight :	49kD
Function :	function:Tubulin is the major constituent of microtubules. It binds two moles of GTP, one at an exchangeable site on the beta chain and one at a non-exchangeable site on the alpha-chain.,PTM:Undergoes a tyrosination/detyrosination cycle, the cyclic removal and re-addition of a C-terminal tyrosine residue by the enzymes tubulin tyrosine carboxypeptidase (TTCP) and tubulin tyrosine ligase (TTL), respectively.,similarity:Belongs to the tubulin family.,subunit:Dimer of alpha and beta chains.,
Subcellular Location :	Cytoplasm, cytoskeleton.

Products Images



Western blot analysis of lysates from U2OS cells, primary antibody was diluted at 1:1000, 4° over night