

ER6L2 rabbit pAb

Catalog No :	YT6605
Reactivity :	Human;Mouse
Applications :	WB
Target :	ER6L2
Gene Name :	ERCC6L2 C9orf102
Protein Name :	ER6L2
Human Swiss Prot No :	A4D997
Mouse Gene Id :	76251
Mouse Swiss Prot No :	Q6DI94
Immunogen :	Synthesized peptide derived from human ER6L2 AA range: 193-243
Specificity :	This antibody detects endogenous levels of ER6L2 at Human/Mouse
Formulation :	Liquid in PBS containing 50% glycerol, 0.5% BSA and 0.02% sodium azide.
Source :	Polyclonal, Rabbit,IgG
Dilution :	WB 1:500-2000
Purification :	The antibody was affinity-purified from rabbit antiserum by affinity-chromatography using epitope-specific immunogen.
Concentration :	1 mg/ml
Storage Stability :	-15°C to -25°C/1 year(Do not lower than -25°C)
Molecularweight :	58kD

Background :

This gene encodes a member of the Snf2 family of helicase-like proteins. The encoded protein may play a role in DNA repair and mitochondrial function. Mutations in this gene have been associated with bone marrow failure syndrome 2. Alternatively spliced transcript variants that encode different protein isoforms have been described. [provided by RefSeq, Apr 2014],

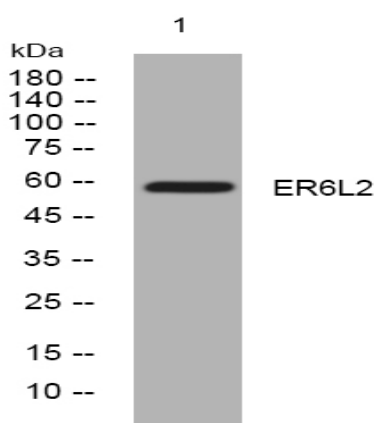
Function :

sequence caution:Translation N-terminally extended.,similarity:Belongs to the SNF2/RAD54 helicase family.,similarity:Contains 1 helicase ATP-binding domain.,similarity:Contains 1 helicase C-terminal domain.,

Subcellular Location :

nucleus,mitochondrion,microtubule organizing center,

Products Images



Western blot analysis of lysates from 293T cells, primary antibody was diluted at 1:1000, 4° over night