

TRI66 rabbit pAb

Catalog No :	YT6600
Reactivity :	Human;Mouse
Applications :	WB
Target :	TRI66
Gene Name :	TRIM66 C11orf29 KIAA0298
Protein Name :	TRI66
Human Gene Id :	9866
Human Swiss Prot No :	O15016
Mouse Gene Id :	330627
Mouse Swiss Prot No :	Q924W6
Immunogen :	Synthesized peptide derived from human TRI66 AA range: 608-658
Specificity :	This antibody detects endogenous levels of TRI66 at Human/Mouse
Formulation :	Liquid in PBS containing 50% glycerol, 0.5% BSA and 0.02% sodium azide.
Source :	Polyclonal, Rabbit,IgG
Dilution :	WB 1:500-2000
Purification :	The antibody was affinity-purified from rabbit antiserum by affinity-chromatography using epitope-specific immunogen.
Concentration :	1 mg/ml
Storage Stability :	-15°C to -25°C/1 year(Do not lower than -25°C)

Molecularweight : 134kD

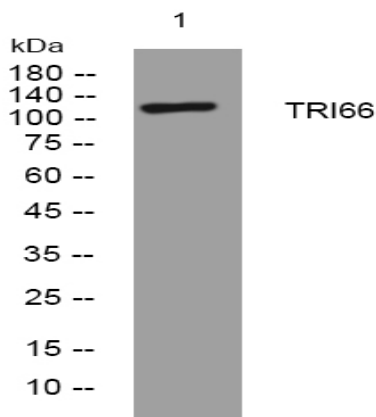
Function :

function:May function as transcription repressor; The repressive effects are mediated, at least in part, by recruitment of deacetylase activity. May play a role as negative regulator of postmeiotic genes acting through CBX3 complex formation and centromere association.,similarity:Contains 1 bromo domain.,similarity:Contains 1 PHD-type zinc finger.,similarity:Contains 2 B box-type zinc fingers.,subcellular location:Forms discrete foci within the centromeric chromocenter and surrounding nucleoplasm.,subunit:Can form homo- and heterodimers. Interacts with CBX5, CBX1 and CBX3 via PxVxL motif.,

Subcellular Location :

Nucleus. Forms discrete foci within the centromeric chromocenter and surrounding nucleoplasm. .

Products Images



Western blot analysis of lysates from A549 cells, primary antibody was diluted at 1:1000, 4° over night