

JERKL rabbit pAb

Catalog No :	YT6596
Reactivity :	Human;Mouse
Applications :	WB
Target :	JERKL
Gene Name :	JRKL
Protein Name :	JERKL
Human Gene Id :	8690
Human Swiss Prot No :	Q9Y4A0
Mouse Gene Id :	77532
Mouse Swiss Prot No :	B2RRL2
Immunogen :	Synthesized peptide derived from human JERKL AA range: 254-304
Specificity :	This antibody detects endogenous levels of JERKL at Human/Mouse
Formulation :	Liquid in PBS containing 50% glycerol, 0.5% BSA and 0.02% sodium azide.
Source :	Polyclonal, Rabbit,IgG
Dilution :	WB 1:500-2000
Purification :	The antibody was affinity-purified from rabbit antiserum by affinity-chromatography using epitope-specific immunogen.
Concentration :	1 mg/ml
Storage Stability :	-15°C to -25°C/1 year(Do not lower than -25°C)

Molecularweight : 58kD

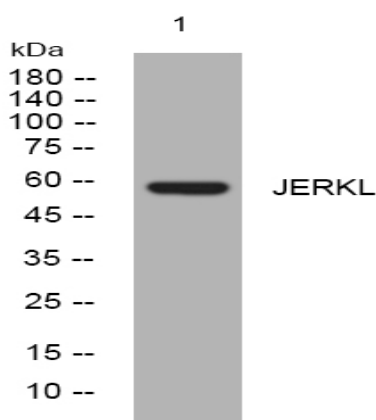
Background : The function of this gene has not yet been defined, however, the encoded protein shares similarity with the human (41% identical) and mouse (34% identical) jerky gene products. This protein may act as a nuclear regulatory protein. Alternatively spliced transcript variants have been found for this gene. [provided by RefSeq, May 2012],

Function : similarity:Belongs to the tigger transposable element derived protein family.,similarity:Contains 1 DDE domain.,similarity:Contains 1 HTH CENPB-type DNA-binding domain.,tissue specificity:Abundantly expressed in the majority of tissues examined, including brain and skeletal muscle.,

Subcellular Location : Nucleus .

Expression : Abundantly expressed in the majority of tissues examined, including brain and skeletal muscle.

Products Images



Western blot analysis of lysates from U2OS cells, primary antibody was diluted at 1:1000, 4° over night