

F8I2 rabbit pAb

Catalog No :	YT6594
Reactivity :	Human;Mouse
Applications :	WB
Target :	F8I2
Gene Name :	F8A1 F8A; F8A2 F8A; F8A3 F8A
Protein Name :	F8I2
Human Gene Id :	474383
Human Swiss Prot No :	P23610
Mouse Swiss Prot No :	Q00558
Immunogen :	Synthesized peptide derived from human F8I2 AA range: 33-83
Specificity :	This antibody detects endogenous levels of F8I2 at Human/Mouse
Formulation :	Liquid in PBS containing 50% glycerol, 0.5% BSA and 0.02% sodium azide.
Source :	Polyclonal, Rabbit,IgG
Dilution :	WB 1:500-2000
Purification :	The antibody was affinity-purified from rabbit antiserum by affinity-chromatography using epitope-specific immunogen.
Concentration :	1 mg/ml
Storage Stability :	-15°C to -25°C/1 year(Do not lower than -25°C)
Molecularweight :	41kD

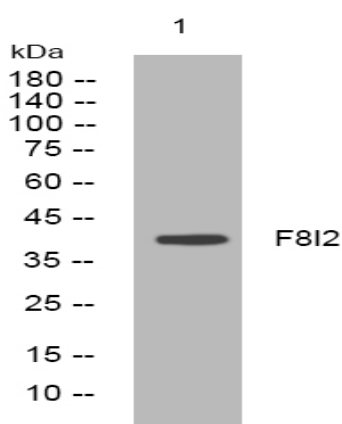
Background : This gene is contained entirely within intron 22 of the factor VIII gene; spans less than 2 kb, and is transcribed in the direction opposite of factor VIII. A portion of intron 22 (int22h), containing F8A, is repeated twice extragenically closer to the Xq telomere. Although its function is unknown, the observation that this gene is conserved in the mouse implies it has some function. Unlike factor VIII, this gene is transcribed abundantly in a wide variety of cell types. [provided by RefSeq, Jul 2008],

Function : function:Not known. Possible housekeeping role.,tissue specificity:Produced abundantly in a wide variety of cell types.,

Subcellular Location : Cytoplasm . Nucleus . Early endosome . Nucleus, nuclear body . Diffuse presence in the cytoplasm and accumulation in the nucleus (PubMed:16476778). In absence of HTT, F8A1/F8A2/F8A3 is concentrated in cytoplasm (By similarity). Colocalized with HTT in endosomes (PubMed:16476778). In neuron found in intranuclear structures, the intranuclear rodlets (INRs), also known as rodlets of Roncoroni, in association with ubiquitin (By similarity). .

Expression : Produced abundantly in a wide variety of cell types.

Products Images



Western blot analysis of lysates from SW480 cells, primary antibody was diluted at 1:1000, 4° over night