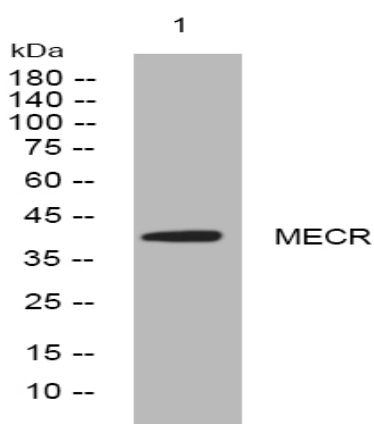


MECR rabbit pAb

Catalog No :	YT6590
Reactivity :	Human;Mouse;Rat
Applications :	WB
Target :	MECR
Fields :	>>Fatty acid biosynthesis;>>Fatty acid elongation;>>Metabolic pathways;>>Fatty acid metabolism
Gene Name :	MECR NBRF1 CGI-63
Protein Name :	MECR
Human Gene Id :	51102
Human Swiss Prot No :	Q9BV79
Mouse Gene Id :	26922
Mouse Swiss Prot No :	Q9DCS3
Rat Gene Id :	29470
Rat Swiss Prot No :	Q9Z311
Immunogen :	Synthesized peptide derived from human MECR AA range: 160-210
Specificity :	This antibody detects endogenous levels of MECR at Human/Mouse/Rat
Formulation :	Liquid in PBS containing 50% glycerol, 0.5% BSA and 0.02% sodium azide.
Source :	Polyclonal, Rabbit,IgG
Dilution :	WB 1:500-2000

Purification :	The antibody was affinity-purified from rabbit antiserum by affinity-chromatography using epitope-specific immunogen.
Concentration :	1 mg/ml
Storage Stability :	-15°C to -25°C/1 year(Do not lower than -25°C)
Molecularweight :	41kD
Function :	catalytic activity:Acyl-CoA + NADP(+) = trans-2,3-dehydroacyl-CoA + NADPH.,function:Catalyzes the reduction of trans-2-enoyl-CoA to acyl-CoA with chain length from C6 to C16 in an NADPH-dependent manner with preference to medium chain length substrate. May have a role in the mitochondrial synthesis of fatty acids.,similarity:Belongs to the zinc-containing alcohol dehydrogenase family. Quinone oxidoreductase subfamily.,subunit:Homodimer.,tissue specificity:Highly expressed in skeletal and heart muscle. Expressed at lower level in placenta, liver, kidney and pancreas. Weakly or not expressed in lung.,
Subcellular Location :	[Isoform 1]: Mitochondrion .; [Isoform 2]: Cytoplasm . Nucleus .
Expression :	Highly expressed in skeletal and heart muscle. Expressed at lower level in placenta, liver, kidney and pancreas. Weakly or not expressed in lung.

Products Images



Western blot analysis of lysates from MDA-MB cells, primary antibody was diluted at 1:1000, 4° over night