

PMS2L rabbit pAb

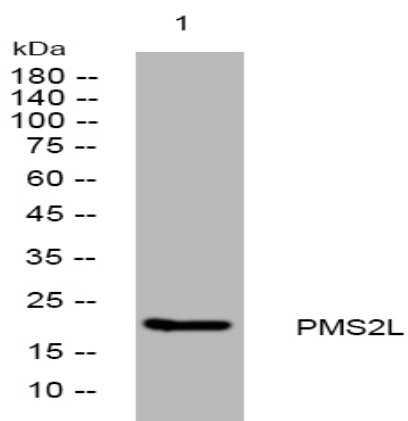
Catalog No :	YT6587
Reactivity :	Human
Applications :	WB;IHC
Target :	PMS2L
Gene Name :	PMS2CL
Protein Name :	PMS2L
Human Swiss Prot No :	Q68D20
Immunogen :	Synthesized peptide derived from human PMS2L AA range: 123-173
Specificity :	This antibody detects endogenous levels of PMS2L at Human
Formulation :	Liquid in PBS containing 50% glycerol, 0.5% BSA and 0.02% sodium azide.
Source :	Polyclonal, Rabbit,IgG
Dilution :	WB 1:500-2000;IHC 1:50-300
Purification :	The antibody was affinity-purified from rabbit antiserum by affinity-chromatography using epitope-specific immunogen.
Concentration :	1 mg/ml
Storage Stability :	-15°C to -25°C/1 year(Do not lower than -25°C)
Molecularweight :	21kD
Function :	caution:According to PubMed:15077197, it is a pseudogene. However, a peptide specific to this protein was identified by mass spectrometry (PubMed:17525332). Given that the product described by PubMed:15077197 is located downstream and on another frame of the transcript, it may explain why PubMed:15256438 could not detect this protein on a Western

blot.,PTM:Phosphorylated upon DNA damage, probably by ATM or ATR.,sequence caution:Wrong choice of transcript.,similarity:Belongs to the DNA mismatch repair mutL/hexB family.,

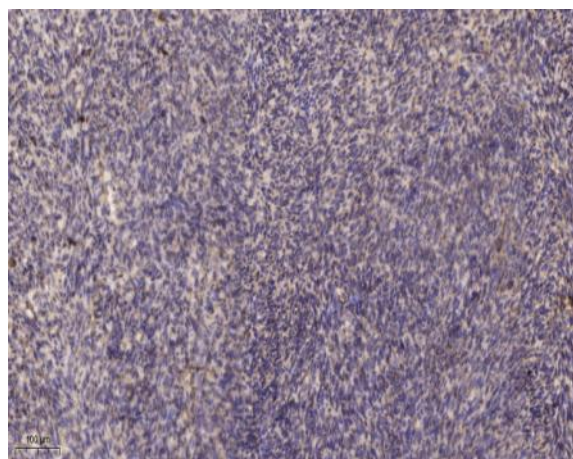
Subcellular Location :

mismatch repair complex,

Products Images



Western blot analysis of lysates from KB cells, primary antibody was diluted at 1:1000, 4° over night



Immunohistochemical analysis of paraffin-embedded human uterus. 1, Antibody was diluted at 1:200(4° overnight). 2, Tris-EDTA,pH9.0 was used for antigen retrieval. 3,Secondary antibody was diluted at 1:200(room temperature, 45min).