

COTL1 rabbit pAb

Catalog No :	YT6584
Reactivity :	Human;Mouse;Rat
Applications :	WB
Target :	COTL1
Gene Name :	COTL1 CLP
Protein Name :	COTL1
Human Gene Id :	23406
Human Swiss Prot No :	Q14019
Mouse Gene Id :	72042
Mouse Swiss Prot No :	Q9CQI6
Rat Gene Id :	361422
Rat Swiss Prot No :	B0BNA5
Immunogen :	Synthesized peptide derived from human COTL1 AA range: 29-79
Specificity :	This antibody detects endogenous levels of COTL1 at Human/Mouse/Rat
Formulation :	Liquid in PBS containing 50% glycerol, 0.5% BSA and 0.02% sodium azide.
Source :	Polyclonal, Rabbit,IgG
Dilution :	WB 1:500-2000
Purification :	The antibody was affinity-purified from rabbit antiserum by affinity-chromatography using epitope-specific immunogen.

Concentration : 1 mg/ml

Storage Stability : -15°C to -25°C/1 year(Do not lower than -25°C)

Molecularweight : 16kD

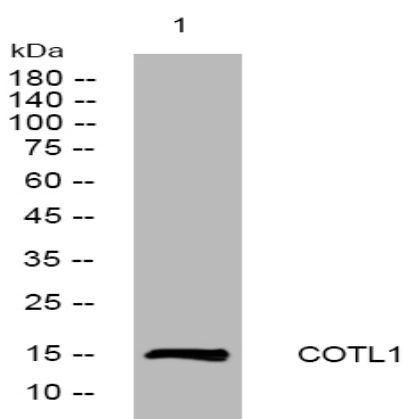
Background : This gene encodes one of the numerous actin-binding proteins which regulate the actin cytoskeleton. This protein binds F-actin, and also interacts with 5-lipoxygenase, which is the first committed enzyme in leukotriene biosynthesis. Although this gene has been reported to map to chromosome 17 in the Smith-Magenis syndrome region, the best alignments for this gene are to chromosome 16. The Smith-Magenis syndrome region is the site of two related pseudogenes. [provided by RefSeq, Jul 2008],

Function : function: Binds to F-actin in a calcium-independent manner. Has no direct effect on actin depolymerization., similarity: Belongs to the actin-binding proteins ADF family. Coactosin subfamily., similarity: Contains 1 ADF-H domain., subunit: Interacts with 5-lipoxygenase (5LO) in a calcium-independent manner., tissue specificity: Widely expressed with highest levels in placenta, lung, kidney and peripheral blood leukocytes and lower levels in brain, liver and pancreas.,

Subcellular Location : Cytoplasm . Cytoplasm, cytoskeleton . Nucleus .

Expression : Widely expressed with highest levels in placenta, lung, kidney and peripheral blood leukocytes and lower levels in brain, liver and pancreas.

Products Images



Western blot analysis of lysates from HCT116 cells, primary antibody was diluted at 1:1000, 4° over night