

ZN605 rabbit pAb

| | |
|------------------------------|---|
| Catalog No : | YT6580 |
| Reactivity : | Human |
| Applications : | WB |
| Target : | ZN605 |
| Fields : | >>Herpes simplex virus 1 infection |
| Gene Name : | ZNF605 |
| Protein Name : | ZN605 |
| Human Gene Id : | 100289635 |
| Human Swiss Prot No : | Q86T29 |
| Immunogen : | Synthesized peptide derived from human ZN605 AA range: 153-203 |
| Specificity : | This antibody detects endogenous levels of ZN605 at Human |
| Formulation : | Liquid in PBS containing 50% glycerol, 0.5% BSA and 0.02% sodium azide. |
| Source : | Polyclonal, Rabbit,IgG |
| Dilution : | WB 1[?]500-2000 |
| Purification : | The antibody was affinity-purified from rabbit antiserum by affinity-chromatography using epitope-specific immunogen. |
| Concentration : | 1 mg/ml |
| Storage Stability : | -15°C to -25°C/1 year(Do not lower than -25°C) |
| Molecularweight : | 71kD |

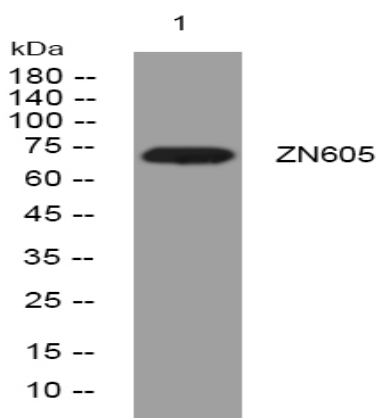
Function :

function:May be involved in transcriptional regulation.,similarity:Belongs to the krueppel C2H2-type zinc-finger protein family.,similarity:Contains 1 KRAB domain.,similarity:Contains 17 C2H2-type zinc fingers.,

Subcellular Location :

Nucleus .

Products Images



Western blot analysis of lysates from SW480 cells, primary antibody was diluted at 1:1000, 4° over night